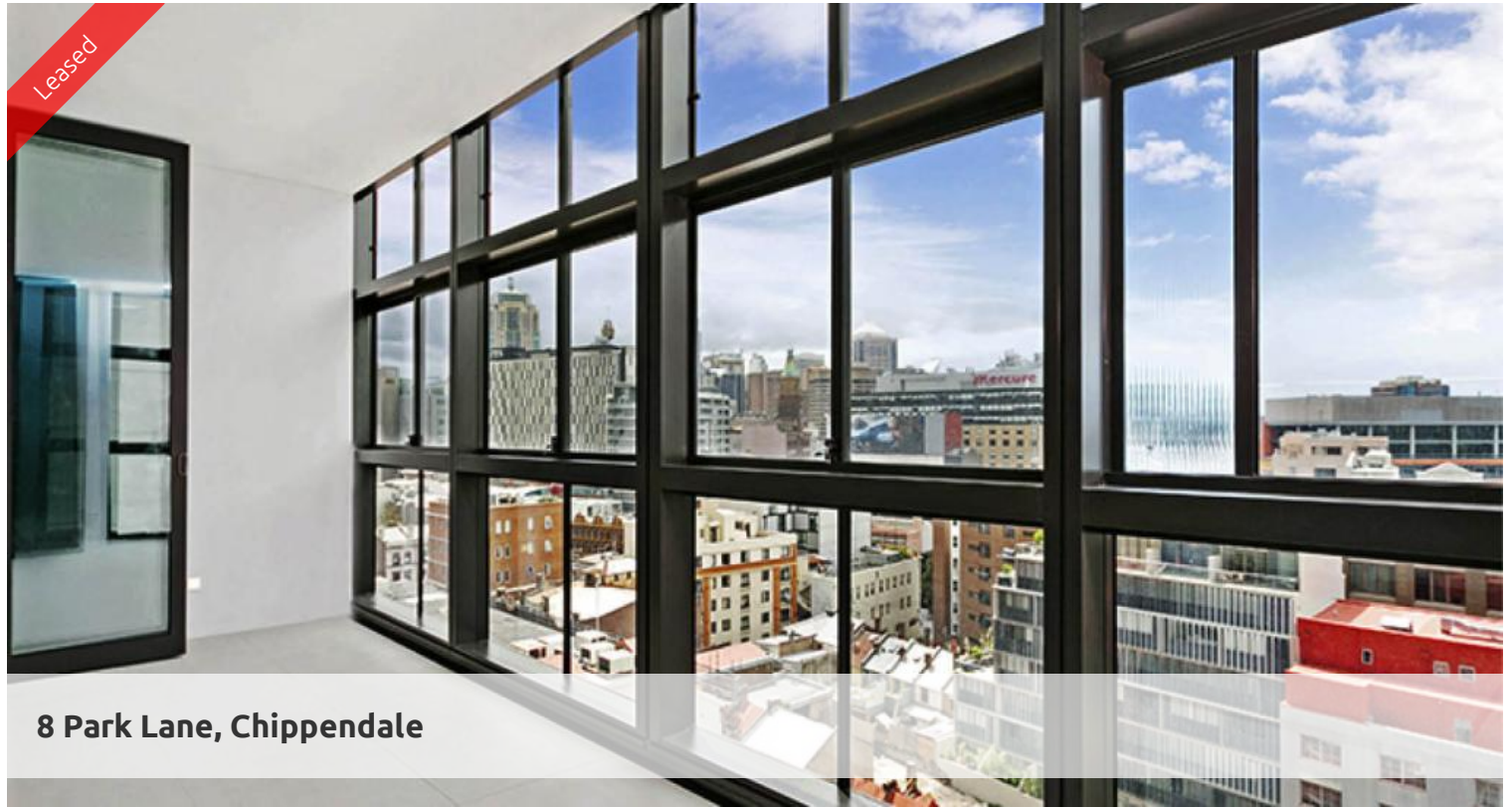
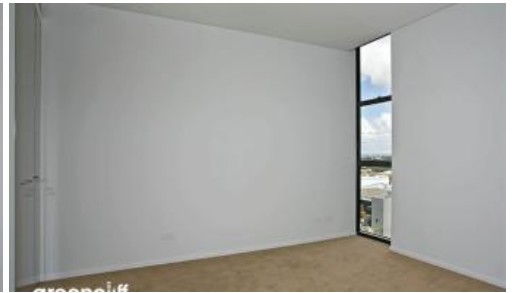


Leased



8 Park Lane, Chippendale



SNAP UP A BARGAIN! 2 BED 1 BATH WITH LARGE LIVING SPACE

Please meet at our office 5 Carlton Street, Chippendale a few minutes before to register and inspect.

Greycliff - Official On-Site Rental Management Team for Central Park!

One Central Park is inner city living at its best!

Enjoy the convenience of shopping, entertainment, dining and transport right at your doorstep. Built around a beautiful park, One Central Park is the perfect combination of luxury meeting nature.

Rich in amenities, this Central Park development features:

- Luxury apartment with stainless steel appliances
- Security building with 24 hour concierge
- Fitness centre with pool, gymnasium & spa
- Bonus of a rooftop BBQ area & spa
- East facing views with great morning sunshine
- 5 level shopping centre with Woolworths
- Air conditioning, intercom
- Large open plan kitchen and living room, modern bathroom

For further information or to inspect, please call Renee Sun on 0405 822 430 or 9199 6555.

**** images used maybe indicatives only****

 2  1  1

Price	Level 11 \$490 PW
Property Type	Rental
Property ID	4701

Agent Details

William Chen - 0430 026 436
william@greycliff.com.au

Office Details

Greycliff Central Park Office
101/5 Carlton Street Chippendale NSW
2008 Australia
02 9199 6555

greycliff
Inner city specialists

The above information provided has been furnished to us by the vendor/s. We have not verified whether or not that information is accurate and do not have any belief in one way or the other in its accuracy. We do not accept any responsibility to any person for its accuracy and do no more than pass it on. All interested parties should make and rely upon their own inquiries in order to determine whether or not this information is in fact accurate.