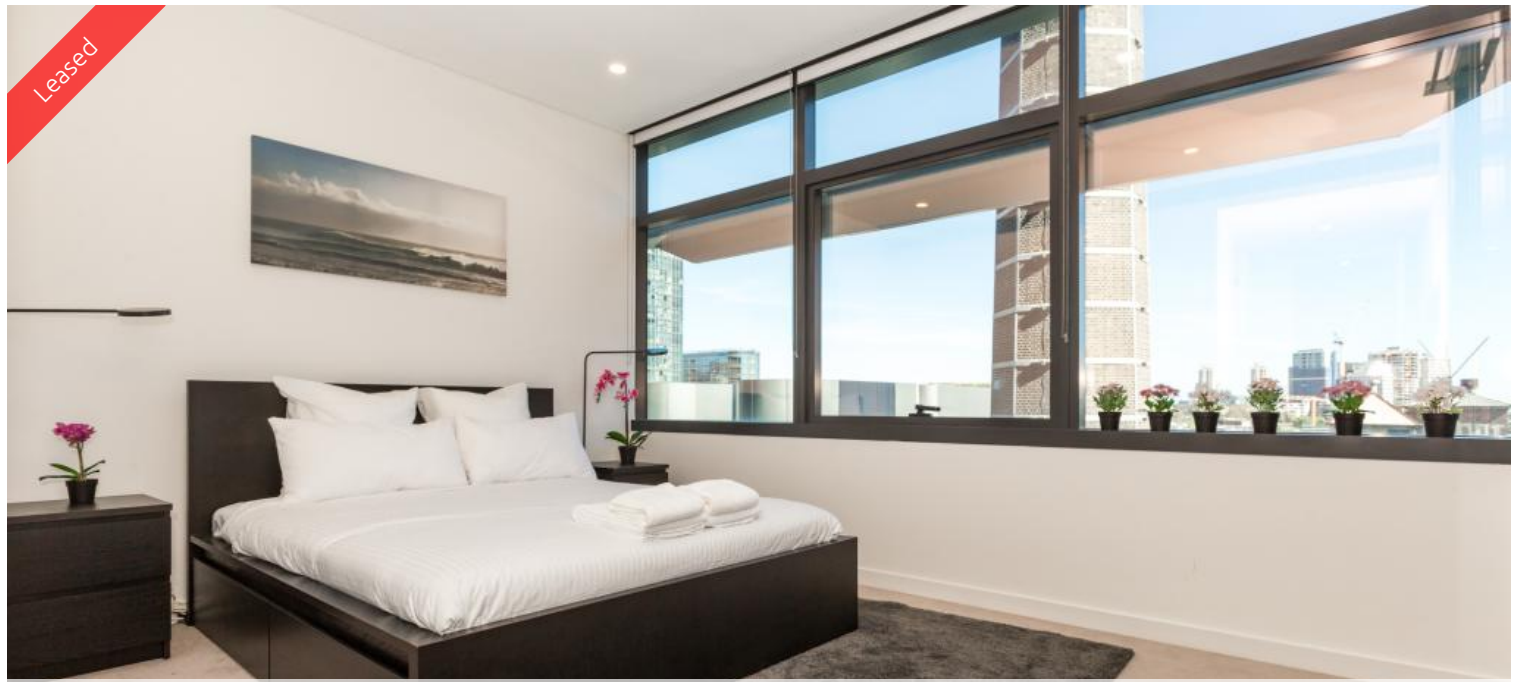


Leased



1 Chippendale Way, Chippendale



Dual Key Immaculate Furnished Studio - Water,gas, electricity and internet included in the rent.

**For Open Inspection please come few minutes early to register at our Chippendale Office 101/5 Carlton Street Chippendale NSW 2008**

**DUO is designed by one of the most esteemed architecture practices in the world, Foster + Partners. Located on Broadway, DUO is positioned at the North West aspect of the Central Park master-plan.**

DUO presents a luxurious lifestyle and premium amenities including an expansive lobby area to meet and greet, mixed-use recreation room, resort-style indoor/outdoor swimming pool, gym, Jacuzzi located on level 2, lounge, dining room and a rooftop area complete with BBQ facilities, entertainment terraces, flexible seating and beautifully landscaped spaces located on level 16.

Features include:

- Modern Kitchen with Stone benches fridge & dishwasher included
- Wooden floors/ carpeted bedroom
- Ducted air conditioning
- Internal laundry with washing machine and dryer
- Built- in wardrobe
- Balcony/deck
- Indoor gym, swimming pool, and spa

For further information or to inspect, please call Renee Sun on 0405 822 430 or 9199 6555.

\*\* images used maybe indicatives only\*\*

2 2

**Price**

Level 9 | \$1000PW Furnished  
Include Bills

**Property  
Type**

Rental

**Property  
ID**

4676

**Agent Details**

William Chen - 0430 026 436  
william@greenciff.com.au

**Office Details**

Greencliff Central Park Office  
101/5 Carlton Street Chippendale NSW  
2008 Australia  
02 9199 6555

**greenciff**  
Inner city specialists