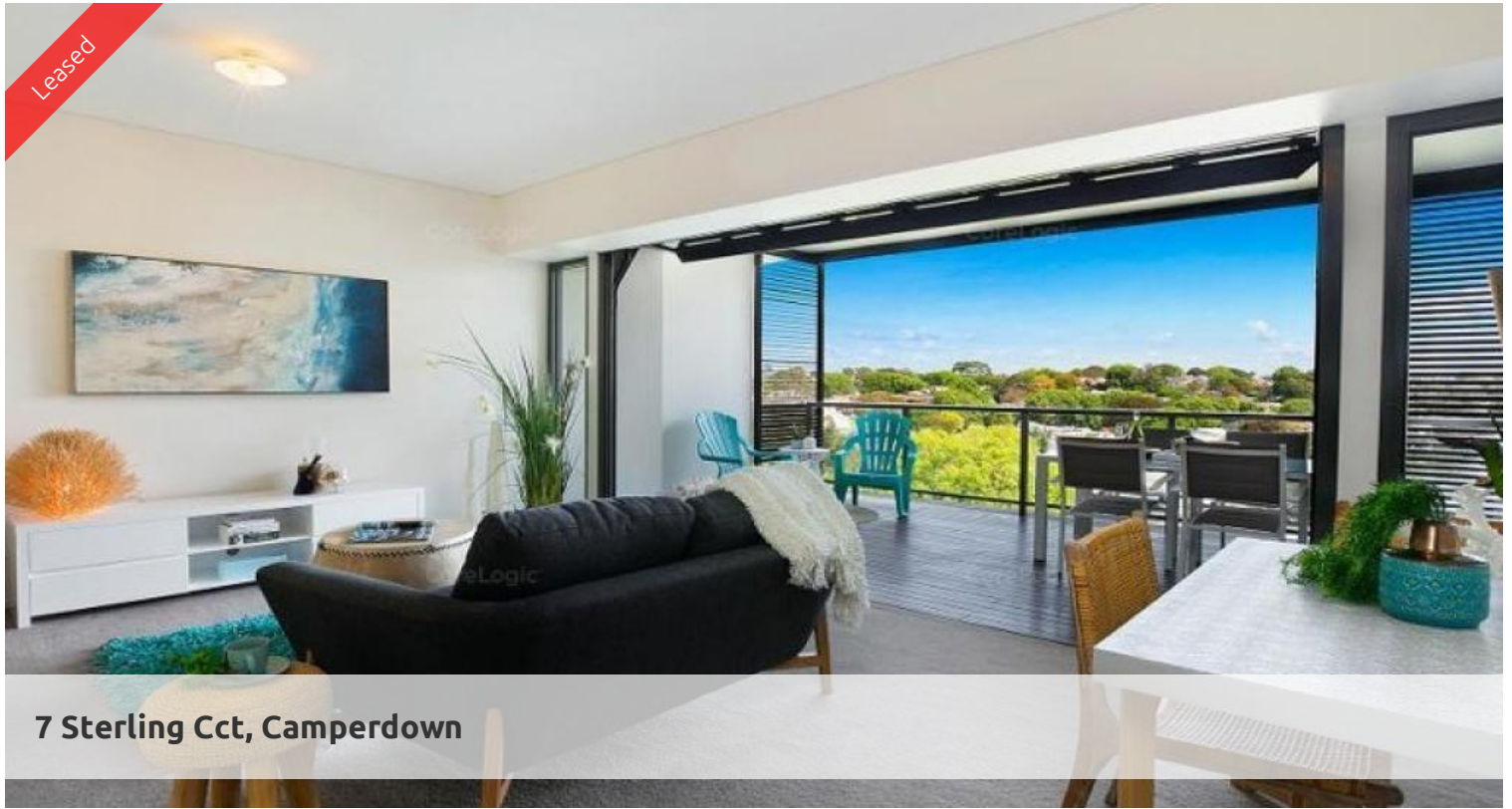


Leased



7 Sterling Cct, Camperdown



## DESIGNER APARTMENT WITH BEAUTIFUL VIEWS

INSPECTION CANCELLED. BY APPOINTMENT ONLY. PLEASE CONTACT UGO ON 0469 652 801

video tour: <https://www.youtube.com/watch?v=7fB5x6qy7C4>

The apartment is modern and stylish, finished with quality fixtures and fitting throughout. The large open plan living area is spacious and sunny opening up onto the loggia with floor to ceiling window taking in the warm northerly sun.

- \* Stylish kitchen with stainless steel appliance, gas cooking and plenty of storage.
  - \* Over sized living and dining area bright and sunny with a beautiful green outlook.
  - \* Modern bathroom with separate laundry.
  - \* Spacious bedroom with floor to ceiling windows with a tranquil outlook and built in robes.
  - \* Huge loggia area which can be enclosed to create a balcony or opened up to flow on from your living area.
  - \* Under cover security parking.
  - \* Security building with lift, gym and swimming pool-Subject to COVID 19 restrictions.
- City Quarter Camperdown is known for its 5 star facilities with a beautiful outdoor lap pool surrounded by a lovely park as well as an indoor pool and full cardio and weights gym. Located in a quiet and beautiful apartment complex and only minutes to the CBD, Glebe and Pyrmont.

🛏 1 🚿 1 🚗 1

**Price**

**Property Type**

**Property ID**

DEPOSIT TAKEN

Rental

4582

### Agent Details

Tammy (Rungnapa) Kanittanon - 0431

511 907 [tammy@greenciff.com.au](mailto:tammy@greenciff.com.au)

Michelle Kilala - 0419 777 239

[michelle@greenciff.com.au](mailto:michelle@greenciff.com.au)

### Office Details

Greenciff Camperdown Office

Shop 1 1 Sterling Cct Camperdown NSW

2050 Australia

02 8262 8262

**greenciff**  
Inner city specialists

For further inquiries please contact Ugo Awuio on 0469 652 801