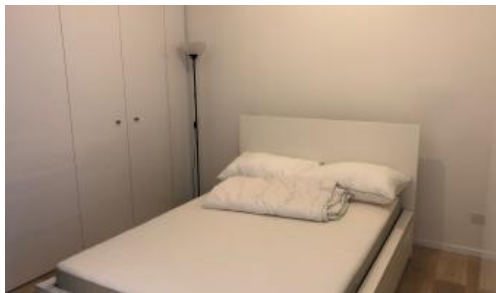
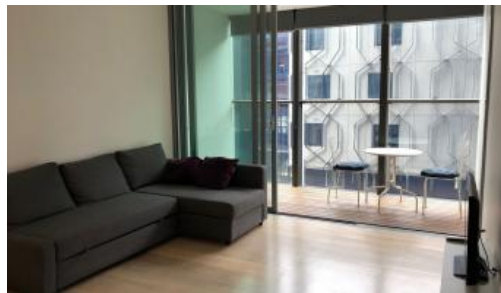




18 Park Lane, Chippendale



FURNISHED ONE BEDROOM SUITE

Please meet at our office on 5 Carlton Street, Chippendale a few minutes before to register and inspect.

"The Mark is the future of vibrant inner city living and a shining example of all that advanced technologies and bold imaginations can contribute to modern and sustainable living"

Located at Central Park Chippendale, The Mark has direct access to a fully equipped gymnasium, an elevated outdoor pool and on your doorstep is an expansive tree lined park named Chippendale Green. Fashionable retail outlets, a Woolworths supermarket and various cafes and eateries such as Din Tai Fung available to your heart's content.

Moments to Central station, buses and surrounding Universities makes living at Central Park the ultimate in downtown living.

The Mark is the ultimate lifestyle precinct.

The apartments boast intelligent and lifestyle-savvy interiors, features

- Ducted air conditioning
- Loggia for indoor/outdoor living
- Fridge and washer/dryer included
- European kitchen appliances/stone bench tops
- The latest bathroom fittings and design
- Timber flooring to the living area/bedroom
- East facing aspect
- Security intercom system

The Mark offers

The Deck - Situated on the rooftop with a spa, terrace spaces to relax

The Lounge Room - Situated on the ground floor with wireless reading room

1 1

Price Level 4 | Deposit Taken
Property Type Rental
Property ID 4571

Agent Details

William Chen - 0430 026 436
 william@greenciff.com.au

Office Details

Greenciff Central Park Office
 101/5 Carlton Street Chippendale NSW
 2008 Australia
 02 9199 6555

greenciff
 Inner city specialists