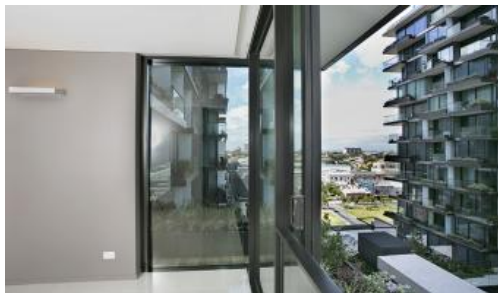


Leased

## Unit 1502, 3 Carlton St, Chippendale



### STUDIO WITH CARSPACE

Please meet at our office 5 Carlton Street, Chippendale a few minutes early to register and inspect.

Large studio with car space in Central Park Available!

One Central Park is inner city living at its best! Enjoy the convenience of shopping, entertainment, dining and transport right at your doorstep. Built around a beautiful park and draped in a living vertical garden, One Central Park is the perfect combination of luxury meeting nature.

Rich in amenities, this Frasers Property development features:

- Luxury studio apartments
- Note rent is inclusive of water usage, electricity & gas
- Security building with 24 hour concierge
- Fitness centre with pool, gymnasium & spa
- 6 star green rated development
- 5 level shopping centre with Woolworths
- More than 30,000sqm of surrounding park and public space.

For more information, or arrange for a private viewing please contact 9199 6555.

\*\* images used maybe indicatives only\*\*

The above information provided has been furnished to us by the vendor/s. We have not verified whether or not that information is accurate and do not have any belief in one way or the other in its accuracy. We do not accept any responsibility to any person for its accuracy and do no more than pass it on. All interested parties should make and rely upon their own inquiries in order to determine whether or not this information is in fact accurate.

 1  1

**Price**

**Property Type**

**Property ID**

DEPOSIT TAKEN

Rental

4552

### Agent Details

William Chen - 0430 026 436

[william@greenciff.com.au](mailto:william@greenciff.com.au)

### Office Details

Greenciff Central Park Office

101/5 Carlton Street Chippendale NSW

2008 Australia

02 9199 6555

**greenciff**  
Inner city specialists