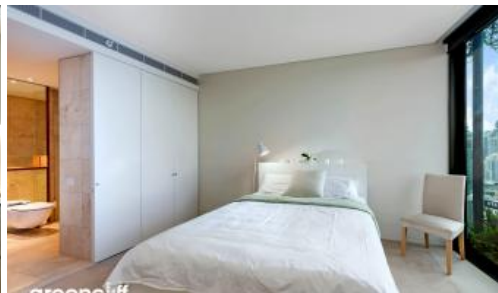




**1 Carlton St, Chippendale**



## CITY LIVING WITH CLASS - SKY CENTRAL PARK

**Please meet at our office 101/5 Carlton Street, Chippendale a few minutes before to register and inspect.**

One Central Park is inner city living at its best!

Enjoy the convenience of shopping, entertainment, dining and transport right at your doorstep. Built around a beautiful park and draped in a living vertical garden, One Central Park is the perfect combination of luxury meeting nature.

Rich in amenities, this Central Park features:

- Luxury apartment with stainless steel appliances
- Timber flooring
- Security building with 24 hour concierge
- Fitness centre with pool, gymnasium & spa
- 6 star green rated development
- 5 level shopping centre with Woolworths
- Spectacular city views from apartment
- Fridge and washer/dryer included
- More than 30,000sqm of surrounding park and public space.
- Access to Sky Garden, rooftop BBQ and spa

For further information or to inspect, please call Renee Sun on 0405 822 430 or 9199 6555.

🛏 2 🚿 2 🚗 1

**Price** Level 30 | \$1250 PW  
**Property Type** Rental  
**Property ID** 4521

### Agent Details

William Chen - 0430 026 436  
 william@greenciff.com.au

### Office Details

Greenciff Central Park Office  
 101/5 Carlton Street Chippendale NSW  
 2008 Australia  
 02 9199 6555

**greenciff**  
 Inner city specialists

The above information provided has been furnished to us by the vendor/s. We have not verified whether or not that information is accurate and do not have any belief in one way or the other in its accuracy. We do not accept any responsibility to any person for its accuracy and do no more than pass it on. All interested parties should make and rely upon their own inquiries in order to determine whether or not this information is in fact accurate