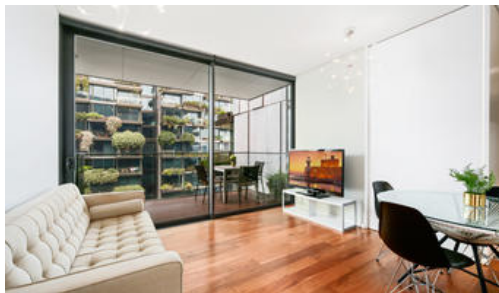




**Unit 1301, 2 Chippendale Way, Chippendale**



## Stunning Sleek and Stylish

Here is your chance to secure an amazing home or a high yielding investment property in the award winning iconic landmark One Central Park development. Featuring two bedrooms along with a large study space ,floorboards through out the living area and a large external balcony.

Beautifully designed and furnished this immaculately presented will suit both the discerning investor or make a great home for someone looking for the best Sydney has to offer.

All of the convenience and life style options of Central Park shopping and dining at your door step ,this property is not to be missed.

Features :

- Aircon
- 24 hour concierge
- Secure undercover car space
- Central Park Shopping access
- Kensington Street DIning
- Secure storage area
- Pool
- Spa
- Smeg appliances

The above information provided has been furnished to us by the vendor/s. We have not verified whether or not that information is accurate and do not have any belief in one way or the other in its accuracy. We do not accept any responsibility to any person for its accuracy and do no more than pass it on. All interested parties should make and rely upon their own inquiries in order to determine whether or not this information is in fact accurate.

 2  1  1

**Price** \$1,080,000 Negotiable  
**Property Type** residential  
**Property ID** 4435  
**Floor Area** 78 m2

### Agent Details

William Chen ( Yuanyuan Chen) - 0430 026 436 william@greycliff.com.au  
 Danny Yeung ( Hei Yeung) - 0451 836 388 danny@greycliff.com.au

### Office Details

Greycliff Central Park Office  
 101/5 Carlton Street Chippendale NSW  
 2008 Australia  
 02 9199 6555

**greenc**  **ff**  
 Inner city specialists