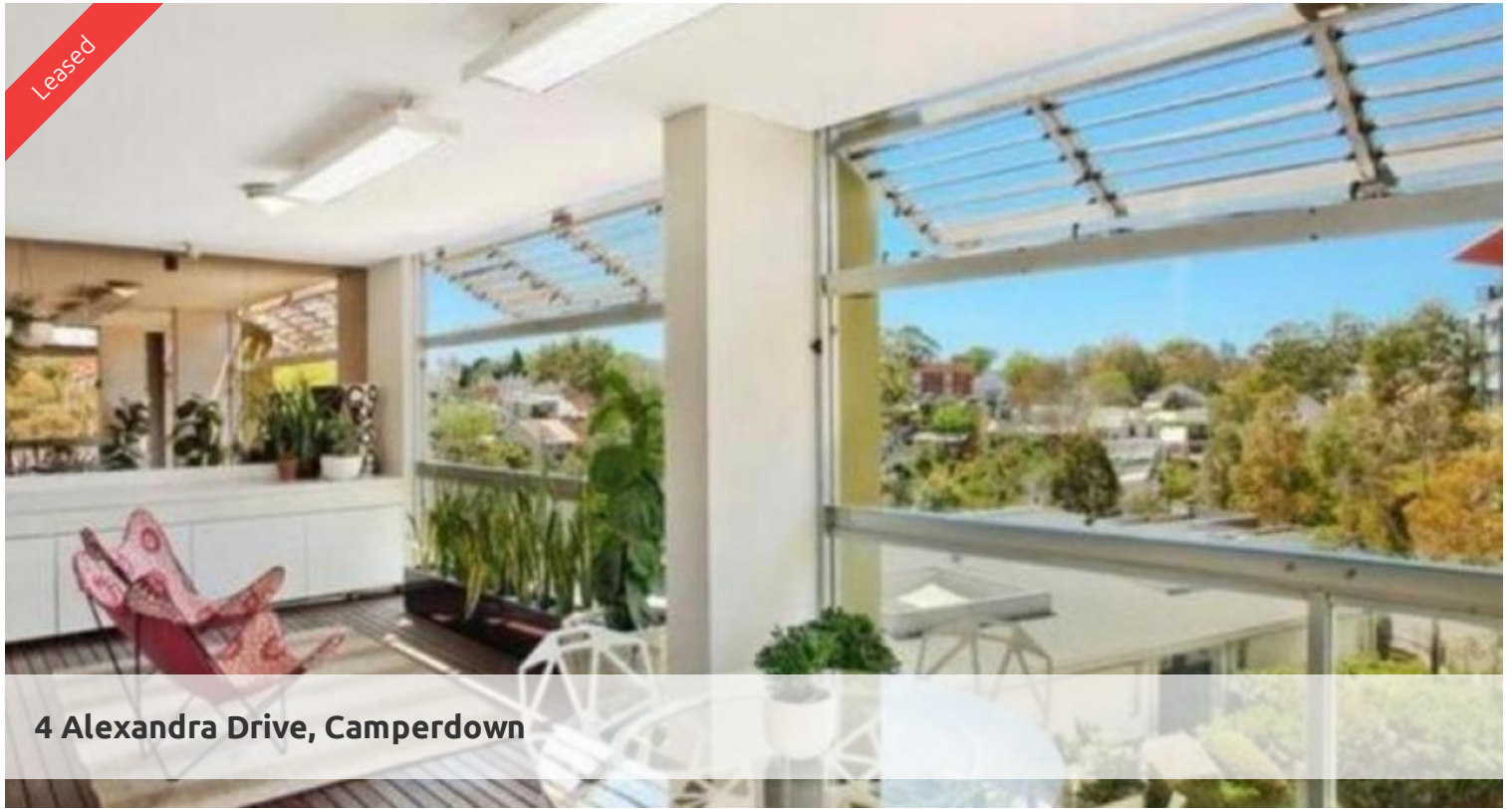


Leased



## 4 Alexandra Drive, Camperdown



### Stunning 2 Bedroom Apartment in City Qtr Camperdown

Contemporary and distinctive urban designed low-rise apartment buildings encircle the landscaped chill-out gardens. Located in Camperdown, one of Sydney's most eclectic lifestyle hubs and right on the city fringe, you get the best of both worlds.

City Quarter is a growing community located in the heart of Camperdown, alongside all of Sydney's big city attractions.

A short 10 minutes bus ride to Sydney CBD, with major universities, RPA Hospital, Broadway Shopping Centre, Annandale shopping village and transport all within walking distance.

Apartment features:-

- 2 bedroom with ensuite to master bedroom
- Spacious living area boasting tranquil leafy outlook
- Ultra modern open plan kitchen with gas cook top and dishwasher
- Private loggia with timber decking, ideal for alfresco entertaining
- Large bedroom with built-in wardrobe, light and airy throughout
- Internal laundry
- Undercover security carspace

Enjoy unlimited access to your choice of a 50 metre outdoor or 25m indoor pool and two gymnasiums. The complex also has 24 hour security, a Japanese restaurant, cafes & convenience store.

For more information or to arrange for private viewing, please contact Ugo Awujo on 0469 652 801

\* images used maybe indicatives \*\*

2 2 1

**Price**  
**Property Type**  
**Property ID**

DEPOSIT MADE  
Rental  
4420

#### Agent Details

Tammy (Rungnapa) Kanittanon - 0431 511 907 tammy@greenciff.com.au  
Michelle Kilala - 0419 777 239 michelle@greenciff.com.au

#### Office Details

Greenciff Camperdown Office  
Shop 1 1 Sterling Cct Camperdown NSW  
2050 Australia  
02 8262 8262

**greenciff**  
Inner city specialists

The above information provided has been furnished to us by the vendor/s. We have not verified whether or not that information is accurate and do not have any belief in one way or the other in its accuracy. We do not accept any responsibility to any person for its