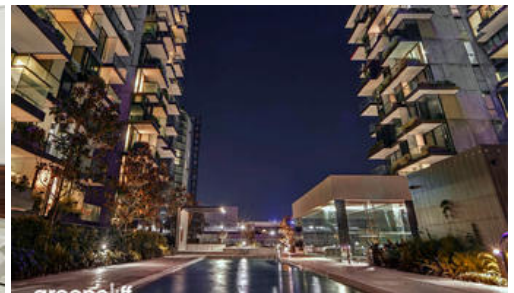
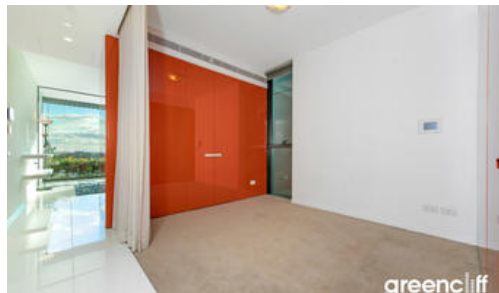


2 Chippendale Way, Chippendale

greenciff



WELL PRESENTED ONE BEDROOM SUITE

Please meet at our office 101/5 Carlton Street, Chippendale a few minutes before to register and inspect.

UNFURNISHED APARTMENT

One Central Park is inner city living at its best!

Rich in amenities, this Central Park development features:

- Near new luxury apartments with stainless steel appliances
- Tiled floor
- Security building with 24 hour concierge
- Fitness centre with pool, gymnasium & spa
- Floor to ceiling windows
- 5 level shopping centre with Woolworths
- White and orange finish
- Fridge and washer/dryer included
- More than 30,000sqm of surrounding park and public space.

For further information or to inspect, please call Jerrie Harris on 0405 808 187 or 9199 6555.

1 bed 1 bath

Price

DEPOSIT TAKEN | \$610
PW

**Property
Type**

rental

Property ID

4410

Agent Details

Office Details

Greenciff Central Park Office
101/5 Carlton Street Chippendale NSW
2008 Australia
02 9199 6555

greenciff
Inner city specialists

The above information provided has been furnished to us by the vendor/s. We have not verified whether or not that information is accurate and do not have any belief in one way or the other in its accuracy. We do not accept any responsibility to any person for its accuracy and do no more than pass it on. All interested parties should make and rely upon their own inquiries in order to determine whether or not this information is in fact accurate.