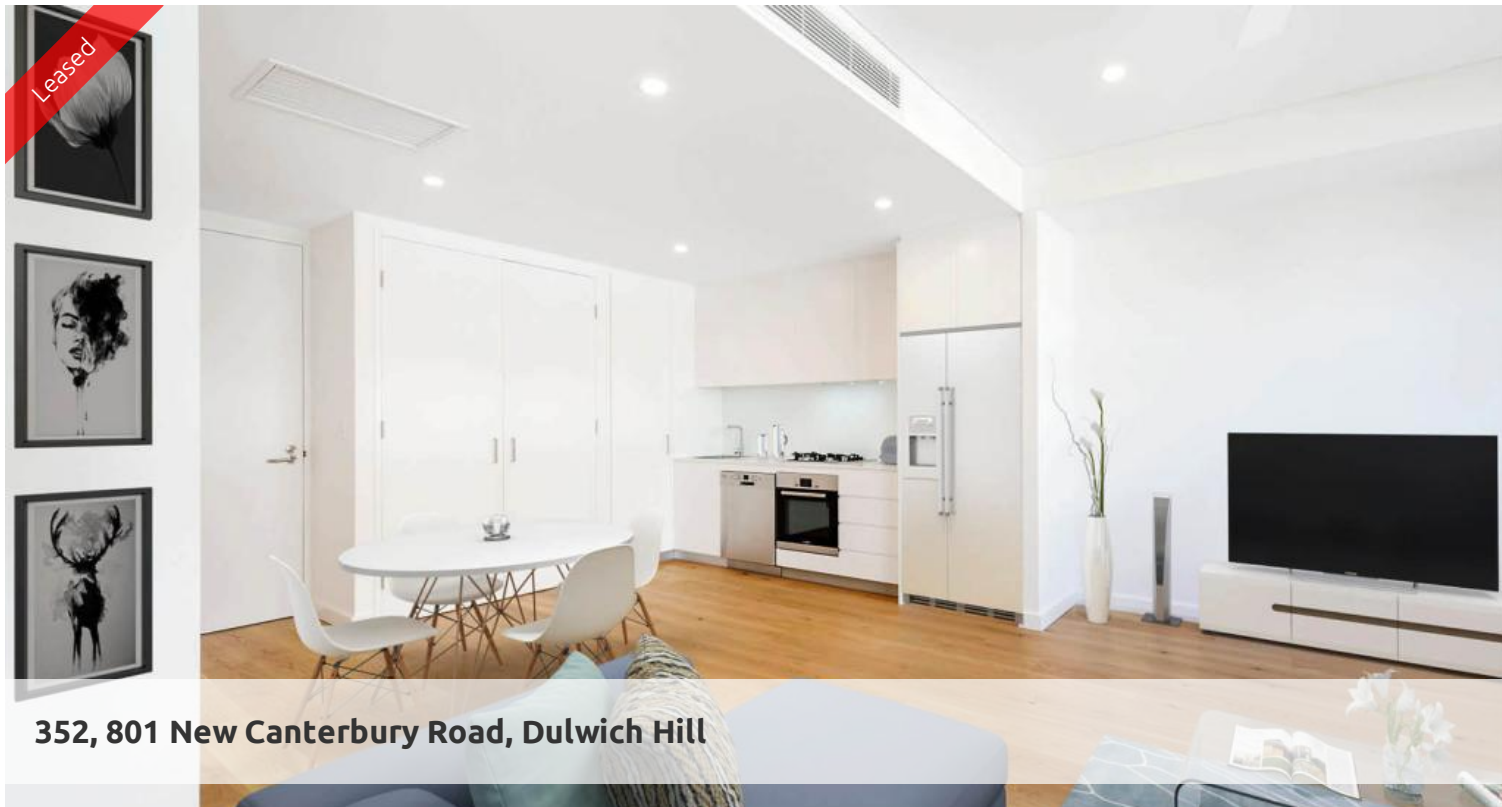


Leased



352, 801 New Canterbury Road, Dulwich Hill



## Fabulous one bedroom at Dulwich Green

Live the life you deserve with the one of the best developments in the Inner West.

Features of this apartment include:

- Spacious combined lounge and dining area leading to outdoor balcony
- Designer kitchen with stainless steel appliances and gas cooking
- Double sized bedrooms
- Ducted air conditioning including ceiling fans to bedrooms
- Timber floors throughout
- Highest quality finishes
- Internal laundry with dryer
- Basement storage
- Located at the back of the block away from New Canterbury Road for peace and quiet

The development includes a communal garden area.

All within short walking distance to Hurlstone Park Rail (8 minutes), Dulwich Grove light rail, local cafes and schools makes this the perfect address to call home.

For further information or to make a time to inspect this apartment, please contact Ugo Awujo on 0469 652 801.

#Pictures used may be indicatives

The above information provided has been furnished to us by the vendor/s. We have not verified whether or not that information is accurate and do not have any belief in one way or the other in its accuracy. We do not accept any responsibility to any person for its accuracy and do no more than pass it on. All interested parties should make and rely upon their own inquiries in order to determine whether or not this information is in fact accurate.

🛏 1 🚿 1 🚗 1

**Price** Level 3/ DEPOSIT MADE

**Property Type** Rental

**Property ID** 4350

### Agent Details

Tammy (Rungnapa) Kanittanon - 0431

511 907 tammy@greenciff.com.au

Michelle Kilala - 0419 777 239

michelle@greenciff.com.au

### Office Details

Greenciff Camperdown Office

Shop 1 1 Sterling Cct Camperdown NSW

2050 Australia

02 8262 8262

**greenciff**  
Inner city specialists