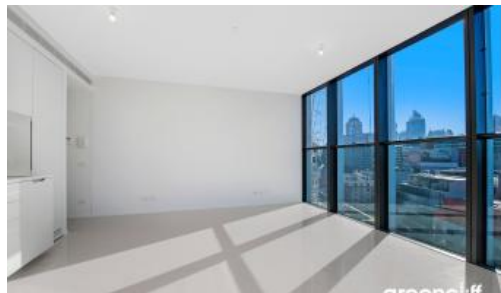




18 Park Lane, Chippendale



Fully furnished - MODERN AND STYLISH

This beautifully presented two bedroom apartment has lovely district and some City Views. Floor to ceiling windows with great natural light and a lovely loggia area. The apartment has been furnished with modern and comfortable furnishing and each bedroom with its own desk.

- * Designer kitchen with stainless steel appliances, gas cooking and integrated dishwasher and fridge.
- * Open plan living area with floor to ceiling windows and lovely views.
- * Modern bathroom with rain shower.
- * Two good size bedrooms both with built in robes.
- * Sun drenched loggia perfect for relaxing or entertaining.
- * Security parking.

Central Park has a huge choice of restaurants, bar's and cafe's to choose from as well as a fantastic shopping center. Located next to Central station and only moments to the center of Sydney.

The above information provided has been furnished to us by the vendor/s. We have not verified whether or not that information is accurate and do not have any belief in one way or the other in its accuracy. We do not accept any responsibility to any person for its accuracy and do no more than pass it on. All interested parties should make and rely upon their own inquiries in order to determine whether or not this information is in fact accurate.

2 1 1

Price

DEPOSIT TAKEN | \$960
PW

Property Type

Rental

Property ID 4325

Agent Details

Lieu Mai - 0415 797 525
lieu@greenciff.com.au

Office Details

Greenciff Sydney Kent St
Level 10/488 Kent Street Sydney NSW
2000 Australia
02 8823 8818

greenciff
Inner city specialists