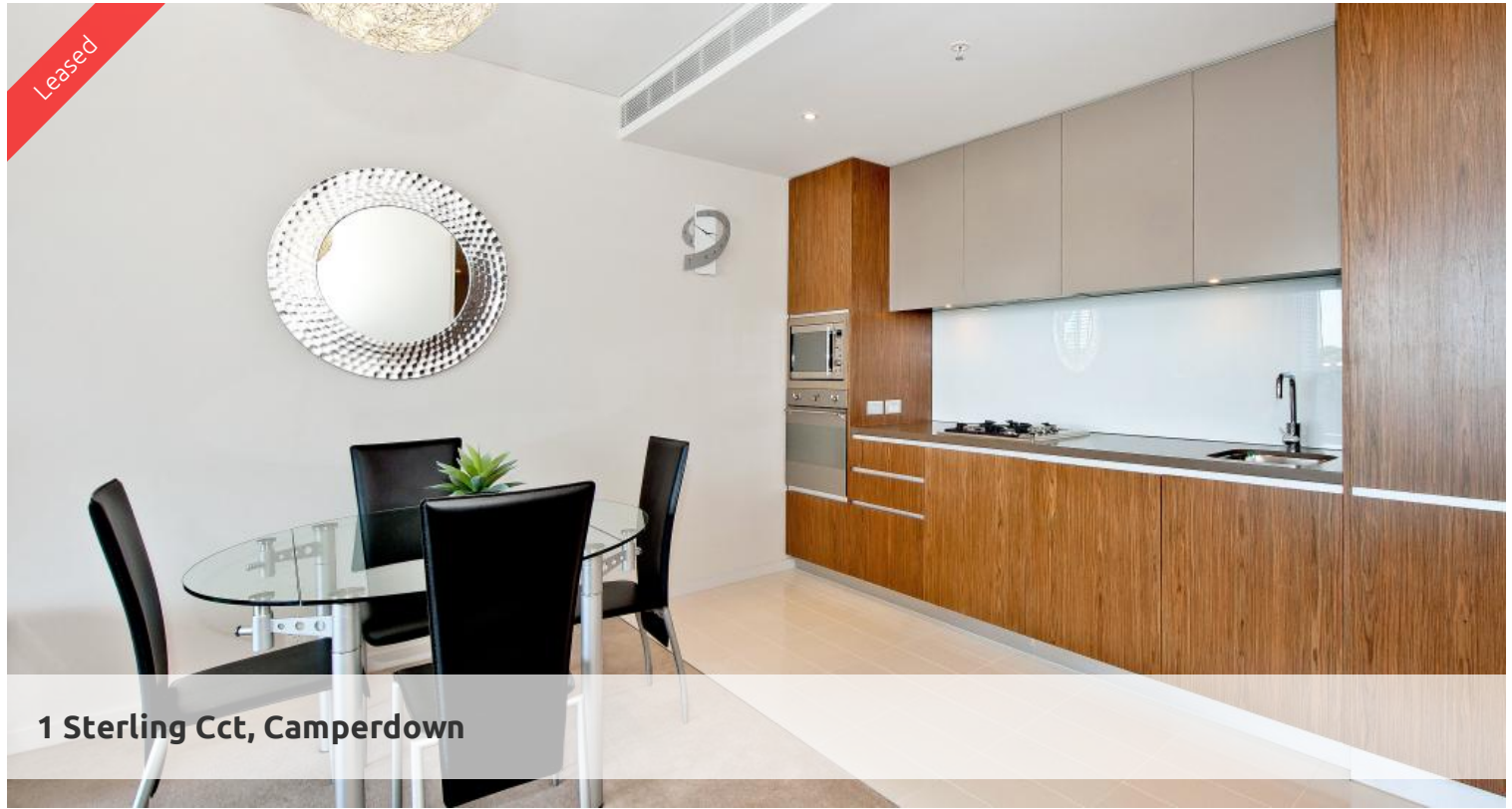


Leased



1 Sterling Cct, Camperdown



## One Bedroom Apartment with Study Available in TRIO!

Occupying an elevated site on the corner of Booth Street and Pyrmont Bridge Road, Camperdown, Trio is a bold and brilliant addition to the landscape.

Trio combines the cosmopolitan culture and accessibility of the Inner West with all the benefits of living spaces designed for the most modern of lifestyles. Sculptural gardens infiltrate the foyer, meshing the building with its environment. Inside the story is equally modern, loggias which enhance and add flexibility to the open plan.

Trio is just a 10 minutes bus ride to Sydney CBD, with major universities, RPA Hospital, Broadway Shopping Centre, Annandale shopping village and transport all within walking distance.

Apartment features: -

- Spacious living area boasting tranquil leafy outlook
- Ultra modern open plan kitchen with gas cook top and dishwasher
- Private loggia with timber decking, ideal for alfresco entertaining
- Large bedroom with built-in wardrobe, light and airy throughout
- Dual access bathroom with separate bath and shower, internal laundry
- Undercover security carspace
- Ducted air conditioning

Enjoy unlimited access to your choice of a 50 metre outdoor or 25m indoor pool and two gymnasiums. The complex also has 24 hour security, a Japanese restaurant, cafes & convenience store.

For more information or arrange for private viewing, please contact Ugo Awujo on 0469 652 801

\*\* images used maybe indicatives only\*\*

🛏 1 🚿 1 🚗 1

<b>Price</b>	Level 7   \$660 PW
<b>Property Type</b>	Rental
<b>Property ID</b>	4238

### Agent Details

Tammy (Rungnapa) Kanittanon - 0431 511 907 [tammy@greenciff.com.au](mailto:tammy@greenciff.com.au)  
Michelle Kilala - 0419 777 239 [michelle@greenciff.com.au](mailto:michelle@greenciff.com.au)

### Office Details

Greenciff Camperdown Office  
Shop 1 1 Sterling Cct Camperdown NSW  
2050 Australia  
02 8262 8262

**greenciff**  
Inner city specialists