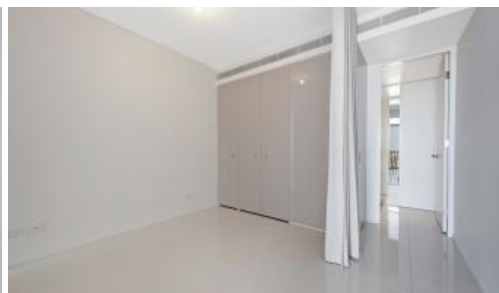
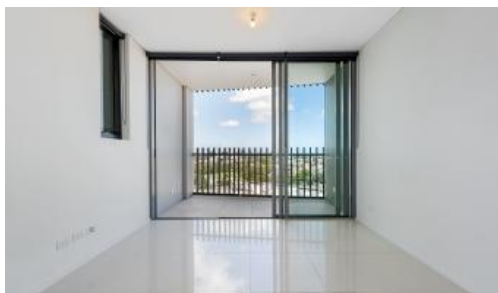


Sold

1913, 18 Park Lane, Chippendale



Affordable one bed suite at Central Park

Calling all First Home Buyers, Downsizers and Investors not to miss the opportunity to view this contemporary one bedroom suite at award winning masterplan development Central Park. Minutes to UTS, Sydney Uni, CBD, Central Station, Kensington St culinary, Central Park Mall. Apartment has clever open plan design to maximise space and natural light.

- Modern Galley Kitchen with Stone benchtop and integrated appliances
- Floor to ceilings windows
- Designer Bathroom and quality fittings
- 24 hours Concierge Service
- Ducted A/C
- 5 Star Resort facilities include Swimming Pool, Spa, Gym

Separate car park is available for sale from \$55,000

Strata levies \$1,794pq

Contact William Chen 0430 026 436 for inspection

🛏 1 🚿 1

Price
Property Type
Property ID

SOLD
Residential
4078

Agent Details

William Chen - 0430 026 436
william@greenciff.com.au

Office Details

Greenciff Central Park Office
101/5 Carlton Street Chippendale NSW
2008 Australia
02 9199 6555

greenciff
Inner city specialists

The above information provided has been furnished to us by the vendor/s. We have not verified whether or not that information is accurate and do not have any belief in one way or the other in its accuracy. We do not accept any responsibility to any person for its accuracy and do no more than pass it on. All interested parties should make and rely upon their own inquiries in order to determine whether or not this information is in fact accurate.