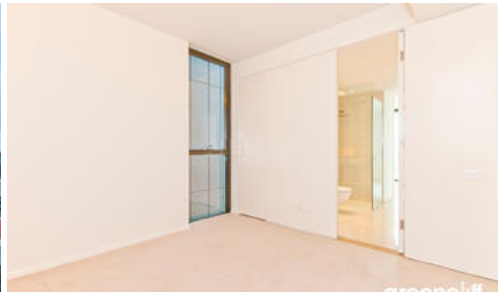


Leased

### 3 Carlton St, Chippendale



#### 2 BED 1 BATH APARTMENT AVAILABLE WITH CITY VIEWS!

**Please meet at our office 5 Carlton Street, Chippendale before the open times to register to inspect.**

Level 27, 3 Carlton St Chippendale

One Central Park is inner city living at its best!

Enjoy the convenience of shopping, entertainment, dining and transport right at your doorstep. Built around a beautiful park and draped in a living vertical garden, One Central Park is the perfect combination of luxury meeting nature.

Rich in amenities, this Central Park development features:

- Luxury apartments with stainless steel appliances
- Unfurnished 2 bedroom with secure parking
- Timber flooring
- Security building with 24 hour concierge
- Fitness centre with pool, gymnasium & spa
- 6 star green rated development
- 5 level shopping centre with Woolworths
- City & district views
- Storage included
- Fridge and washer/dryer included

 2  1  1

**Price**

Level 27 | DEPOSIT  
TAKEN

**Property  
Type**

rental

**Property ID**

4074

#### Agent Details

#### Office Details

Greencliff Central Park Office  
101/5 Carlton Street Chippendale NSW  
2008 Australia  
02 9199 6555

**greenc**  **ff**  
Inner city specialists

The above information provided has been furnished to us by the vendor/s. We have not verified whether or not that information is accurate and do not have any belief in one way or the other in its accuracy. We do not accept any responsibility to any person for its accuracy and do no more than pass it on. All interested parties should make and rely upon their own inquiries in order to determine whether or not this information is in fact accurate.