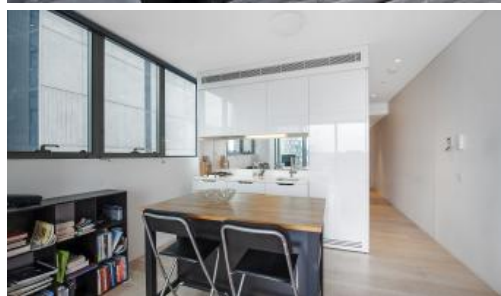


Sold



1203, 18 Park Lane, Chippendale



High yield 2 Bedroom Dual Key with Central Park view

Enjoy the convenience of shopping, entertainment, dining and transport right at your doorstep. Built around a beautiful park, Central Park is the perfect combination of luxury meeting nature.

Rich in amenities, this development features:

- Luxury kitchens with stainless steel appliances
- Security building with 24-hour concierge
- Fitness centre with pool, gymnasium & spa
- 6 star green rated development
- 5 level shopping centre with Woolworths for all your daily shopping needs

Special Property features:

- Dual Key
- 2 Kitchen
- 2 Laundry room
- 2 Loggia
- Level 24 rooftop garden

Outgoings per quarter (approx.):

- Strata fees \$3,388
- Council rates \$250
- Water rates \$200

Weekly rent: \$1330 pw

For more information or to arrange a viewing, please contact Danny Yeung of Greencliff Realty on 0451 836 388

Disclaimer: Images are indicative only

🛏 2 🚿 2 🚗 1

Price

Property Type

Property ID

SOLD

Residential

4028

Agent Details

William Chen - 0430 026 436

william@greencliff.com.au

Office Details

Greencliff Central Park Office
101/5 Carlton Street Chippendale NSW
2008 Australia
02 9199 6555

greenc **ff**
Inner city specialists