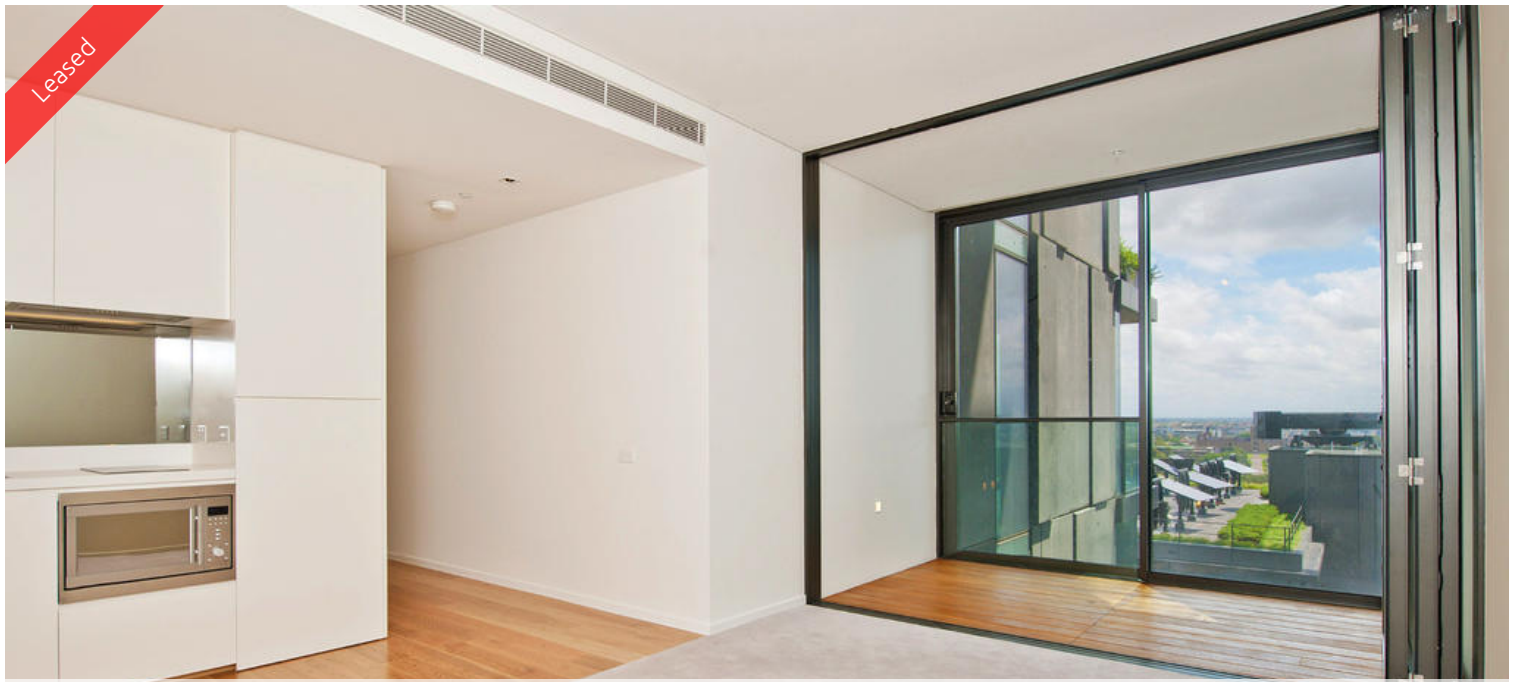


Leased



**3 Carlton St, Chippendale**



## BILLS INCLUDED STUDIO APARTMENT

**Please meet at our office 101/5 Carlton Street, Chippendale a few minutes before to register and inspect.**

One Central Park is inner city living at its best!

Enjoy the convenience of shopping, entertainment, dining and transport right at your doorstep. Built around a beautiful park and draped in a living vertical garden, One Central Park is the perfect combination of luxury meeting nature.

Rich in amenities, this Central Park features:

- Luxury apartments with stainless steel appliances
- Tiled & Carpet flooring
- Security building with 24 hour concierge
- Fitness centre with pool, gymnasium & spa
- 6 star green rated development
- 5 level shopping centre with Woolworths
- Loggia for indoor/outdoor living
- Electricity, gas and water bills inclusive
- Fridge and washer/dryer included
- More than 30,000sqm of surrounding park and public space.

For further information or to inspect, please call Nathan Sitou on 0466 110 429 or

The above information provided has been furnished to us by the vendor/s. We have not verified whether or not that information is accurate and do not have any belief in one way or the other in its accuracy. We do not accept any responsibility to any person for its accuracy and do no more than pass it on. All interested parties should make and rely upon their own inquiries in order to determine whether or not this information is in fact accurate.

 1  1

### Price

DEPOSIT TAKEN | \$520  
PW

### Property Type

rental

**Property ID** 4009

### Agent Details

Nathan Sitou - 0466 110 429  
nathan@greenciff.com.au

### Office Details

Greenciff Central Park Office  
101/5 Carlton Street Chippendale NSW  
2008 Australia  
02 9199 6555

**greenciff**  
Inner city specialists