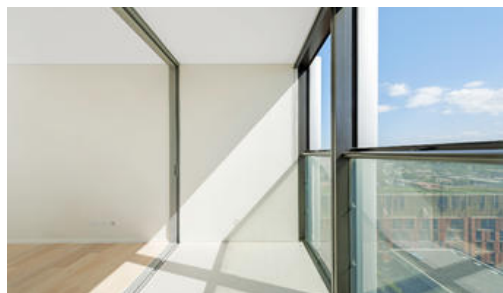


Sold

1503, 18 Park Lane, Chippendale



High level 2 Bedroom Dual Key with Central Park view

Rare find 2 bedroom dual key on high level of the building with view of Central Park.

Enjoy the convenience of shopping, entertainment, dining and transport right at your doorstep. Built around a beautiful park, Central Park is the perfect combination of luxury meets nature.

Rich in amenities, this establishment features:

- Luxury kitchens with stainless steel appliances
- Security building with 24-hour concierge
- Fitness centre with pool, gymnasium & spa
- 6 star green rated development
- 5 level shopping centre with Woolworths for all your daily shopping needs

Special features of the property:

- Dual Key
- 2 Kitchen
- 2 Laundry room
- 2 Loggia
- Level 24 rooftop garden

Outgoings per quarter (approx.):

- Strata fees \$3,455
- Council rates \$250

2 2 1

Price

SOLD

Property Type

residential

Property ID

4000

Floor Area

100 m2

Agent Details

Danny Yeung (Hei Yeung) - 0451 836
388 danny@greenciff.com.au

Office Details

Greenciff Central Park Office
101/5 Carlton Street Chippendale NSW
2008 Australia
02 9199 6555

greenciff
Inner city specialists

The above information provided has been furnished to us by the vendor/s. We have not verified whether or not that information is accurate and do not have any belief in one way or the other in its accuracy. We do not accept any responsibility to any person for its accuracy and do no more than pass it on. All interested parties should make and rely upon their own inquiries in order to determine whether or not this information is in fact accurate.