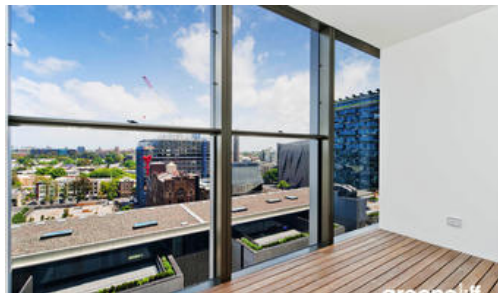
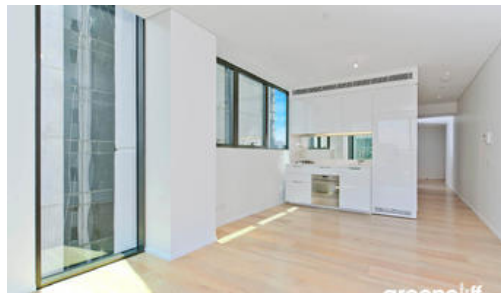




18 Park Lane, Chippendale



DUAL KEYED ONE BEDROOM APARTMENT

Please meet at our office 101/5 Carlton Street, Chippendale a few minutes before to register and inspect.

Unlike many other dual keyed apartments, the property features your own self contained laundry and still is all bills inclusive

"The Mark is the future of vibrant inner city living and a shining example of all that advanced technologies and bold imaginations can contribute to modern and sustainable living"

The apartments boast intelligent and lifestyle-savvy interiors, features

- Ducted air conditioning
- Loggia for indoor/outdoor living
- Fridge and washer/dryer included
- European kitchen appliances/stone bench tops
- West facing aspect
- Grey tiled flooring to the living area/ Carpeted bedroom
- Electricity, Gas and Water bills inclusive
- Self contained laundry (not shared)

The Mark offers

The Deck - Situated on the rooftop with a spa, terrace spaces to relax

The Lounge Room - Situated on the ground floor with wireless reading room

The above information provided has been furnished to us by the vendor/s. We have not verified whether or not that information is accurate and do not have any belief in one way or the other in its accuracy. We do not accept any responsibility to any person for its accuracy and do no more than pass it on. All interested parties should make and rely upon their own inquiries in order to determine whether or not this information is in fact accurate.

1 bed 1 bath

Price

DEPOSIT TAKEN | \$660
PW

Property Type

rental

Property ID 3986

Agent Details

Nathan Sitou - 0466 110 429
nathan@greenciff.com.au

Office Details

Greenciff Central Park Office
101/5 Carlton Street Chippendale NSW
2008 Australia
02 9199 6555

greenciff
Inner city specialists