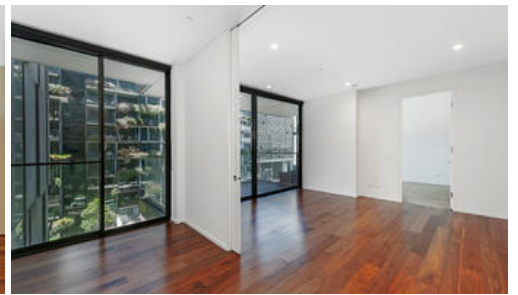
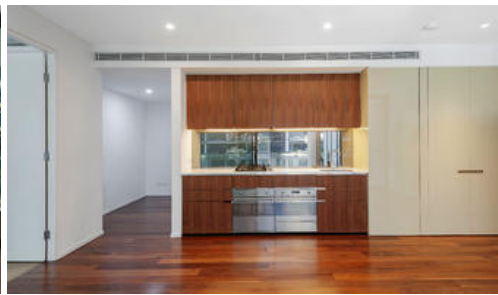




W920, 2 Chippendale Way, Chippendale



East Facing Two Bedroom Inner City Apartment - Central Park

Maximum Space, Vertical Gardens, Pool View.

The interiors are designed by William Smart of Smart Design Studio.

The apartment is surrounded by open green spaces and shopping at your doorstep.

Features -

- * Double-sized master bedroom w/ built-in robe
- * Streamlined galley-style kitchen w/ steel gas appliances
- * Concealed internal laundry, study elcove
- * Balcony w/ wooden deck & pool terrace outlook
- * Timber flooring, ducted air conditioning, linen storage
- * secure car space, separate storage cage
- * 24hour Conceirge
- * 20m outdoor heated pool & spa, fully equipped commercial-grade gymnasium

The above information provided has been furnished to us by the vendor/s. We have not verified whether or not that information is accurate and do not have any belief in one way or the other in its accuracy. We do not accept any responsibility to any person for its accuracy and do no more than pass it on. All interested parties should make and rely upon their own inquiries in order to determine whether or not this information is in fact accurate.

 2  1  1

Price

SOLD

Property Type

residential

Property ID

3973

Floor Area

75 m²

Agent Details

Danny Yeung (Hei Yeung) - 0451 836
388 danny@greycliff.com.au

Office Details

Greycliff Sydney Kent St
Level 10/488 Kent Street Sydney NSW
2000 Australia
02 8823 8818

greenc  **ff**
Inner city specialists