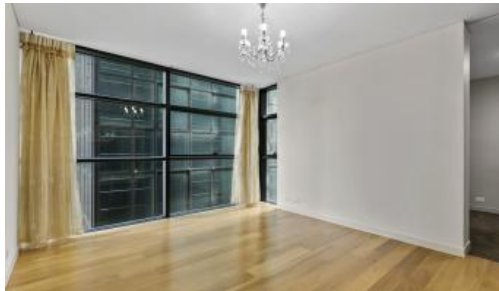


Leased

101 Bathurst St, Sydney



DEPOSIT TAKEN - one bedroom with study nook

DEPOSIT TAKEN - Lumiere is a beautiful high rise building modern and sleek, finished with quality fixture and fittings. The builder offers residents amazing fitness facilities with a 50m pool that is inside and out and a fully equipped gym with cardio and weights room. Positioned in the heart of the CBD with a huge choice of shopping, dinning and drinking all around you. Town Hall station is right at your door.

- * Modern open plan kitchen with gas cooking and integrated dishwasher.
- * Good size living area with floor to ceiling windows and polished floors.
- * Sleek bathroom with rain shower.
- * Good size bedroom with built in robes.
- * Internal laundry.
- * Study area.

The above information provided has been furnished to us by the vendor/s. We have not verified whether or not that information is accurate and do not have any belief in one way or the other in its accuracy. We do not accept any responsibility to any person for its accuracy and do no more than pass it on. All interested parties should make and rely upon their own inquiries in order to determine whether or not this information is in fact accurate.

 1  1

Price	Level 22 \$700 PW
Property Type	Rental
Property ID	3954

Agent Details

Lieu Mai - 0415 797 525
lieu@greenciff.com.au

Office Details

Greenciff Sydney Kent St
Level 10/488 Kent Street Sydney NSW
2000 Australia
02 8823 8818

greenciff
Inner city specialists