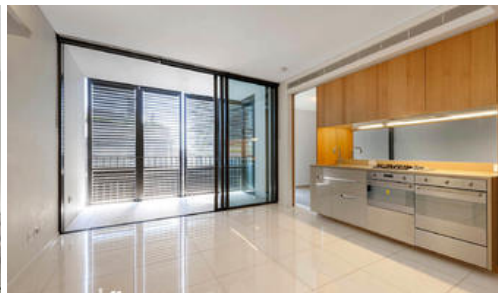


8 Park Lane, Chippendale



ONE BEDROOM APARTMENT IN CENTRAL PARK

Please meet at our office on 5 Carlton Street, Chippendale a few minutes before to register and inspect.

One Central Park is inner city living at its best!

Rich in amenities, this Central Park development features:

- Luxury apartments with stainless steel appliances
- Security building with 24 hour concierge
- Fitness centre with pool, gymnasium & spa
- Bonus of a rooftop BBQ area & spa
- 6 star green rated development
- Ample of windows for natural lighting
- West facing aspect
- Open balcony for indoor/outdoor living

For further information or to inspect, please call Nathan Sitou on 0466 110 429 or 9199 6555.

**** images used maybe indicatives only****

The above information provided has been furnished to us by the vendor/s. We have not verified whether or not that information is accurate and do not have any belief in one way or the other in its accuracy. We do not accept any responsibility to any person for its accuracy and do no more than pass it on. All interested parties should make and rely upon their own inquiries in order to determine whether or not this information is in fact accurate.

1 1

Price

DEPOSIT TAKEN | \$620
PW

Property Type

rental

Property ID 3924

Agent Details

Nathan Sitou - 0466 110 429
nathan@greycliff.com.au

Office Details

Greycliff Central Park Office
101/5 Carlton Street Chippendale NSW
2008 Australia
02 9199 6555

greenc  **ff**
Inner city specialists