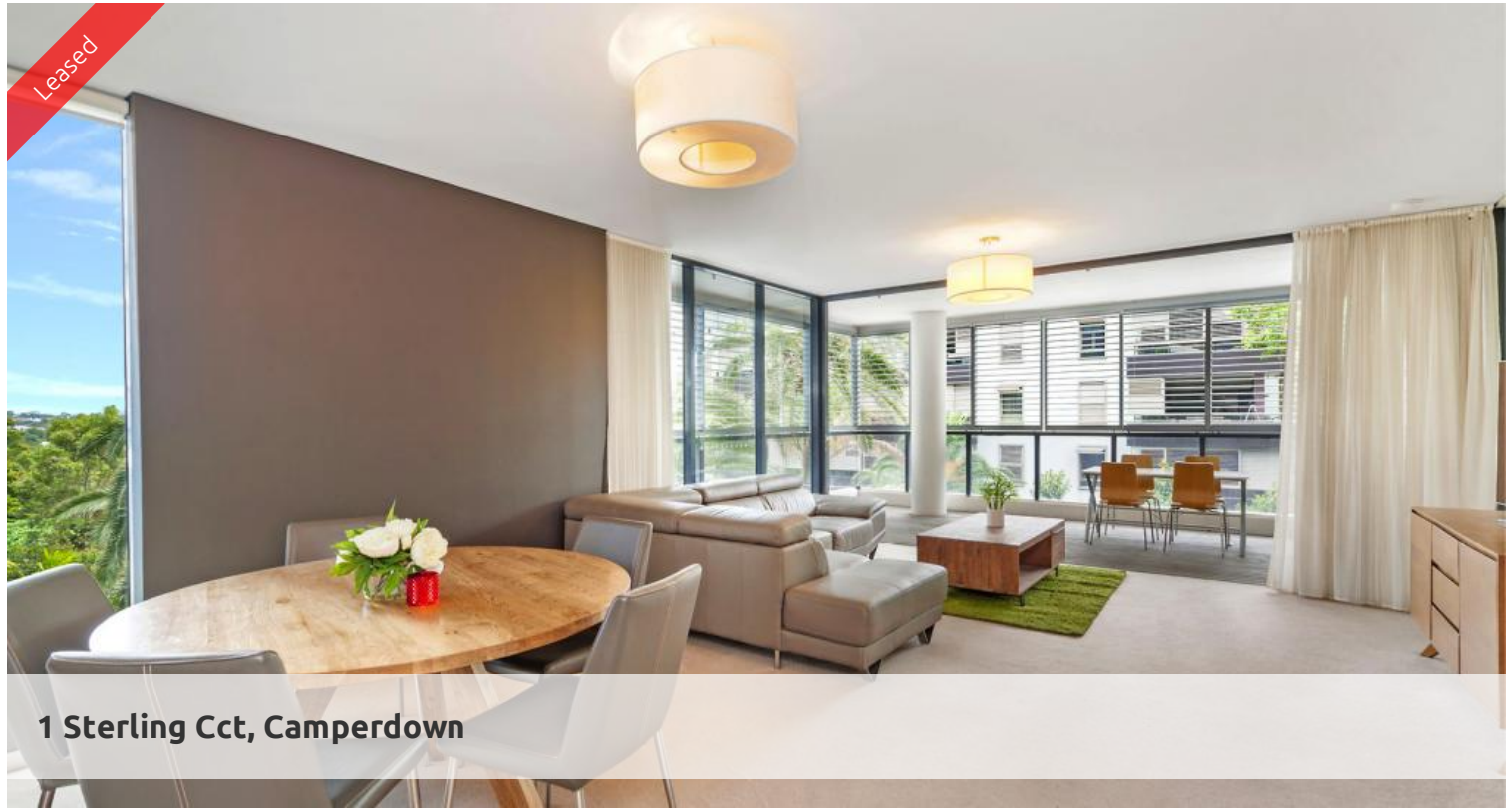
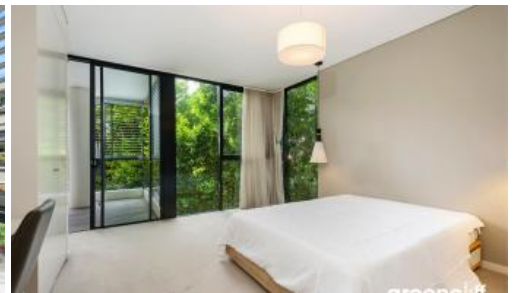


Leased



1 Sterling Cct, Camperdown



Large 2 bedroom Furnished Apartment In Trio

Situated in the much sought after TRIO Residence is this expansive two bedroom furnished apartment. The largest layout of its kind in the south block this premises wont disappoint.

It features an expansive loggia, generous entertaining space and chic finishes and award-winning facilities at its doorstep. Perfect for those who desire sophisticated urban living, it's conveniently close to Glebe and Annandale villages.

- Two large bedrooms with built-ins, main with ensuite and bath
- Generous glass-embraced living and dining stepping out onto the loggia
- Spacious entertaining loggia framed by sliding louvres
- Elegant Caesar Stone, Smeg gas island kitchen , dishwasher and microwave
- Sophisticated furniture to match amazing space
- Underground parking (no storage cage), lift, ducted air conditioning
- 50m outdoor pool, 25m indoor lap pool, two gyms, 24hr security
- Onsite cafe, restaurants and minimart, lovingly manicured grounds
- 12 month lease only

Furniture package as viewed

For more information please call Nicole Guibani on 0435 127 552. Private inspections welcomed.

🛏 2 🚿 2 🚗 1

Price

L4/ 1 Sterling Circuit |
DEPOSIT TAKEN

Property Type

Rental

Property ID

3901

Agent Details

Michelle Kilala - 0419 777 239
michelle@greenciff.com.au

Office Details

Greencliff Camperdown Office
Shop 1 1 Sterling Cct Camperdown NSW
2050 Australia
02 8262 8262

greenciff
Inner city specialists