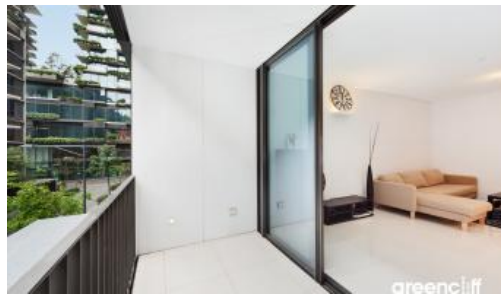


**213, 8 Park Lane, Chippendale**



## Spacious one bedroom apartment asking \$670,000

Boasting a central location in the heart of Central Park, this designer one bedroom apartment offers absolute convenience and access to an abundance amenities at your doorstep.

Enjoy open plan living and dining, with a full sized kitchen, appointed with Smeg appliances that flows seamlessly onto an open balcony. Spacious bedroom offers ample storage space with a study nook coupled with a generously sized ensuite attached.

Rich in amenities, this Central Park apartment features:

- Full sized kitchen with stainless steel appliances
- Award winning modern design
- Elegant finishes, with both timber and carpet flooring
- Generously sized balcony
- Secure storage cage
- Security building with 24 hour concierge
- Fitness centre with heated pool, commercial sized gym & spa
- 6 star green rated development
- 5 level shopping centre with Woolworths

This apartment offers an abundance of amenities right at your doorstep. Step right out onto Broadway, Central Park Mall, Central Station, Spice Alley, UTS, Sydney University, Homebush and City Centre.

1 1 50 m2

<b>Price</b>	Asking Price \$670,000
<b>Property Type</b>	Residential
<b>Property ID</b>	3887
<b>Land Area</b>	50 m2

### Inspection Times

Sat 27 Apr, 1:00 PM - 1:30 PM

### Agent Details

Danny Yeung - 0451 836 388  
danny@greenciff.com.au  
William Chen - 0430 026 436  
william@greenciff.com.au

### Office Details

Greenciff Central Park Office  
101/5 Carlton Street Chippendale NSW  
2008 Australia  
02 9199 6555

**greenciff**  
Inner city specialists