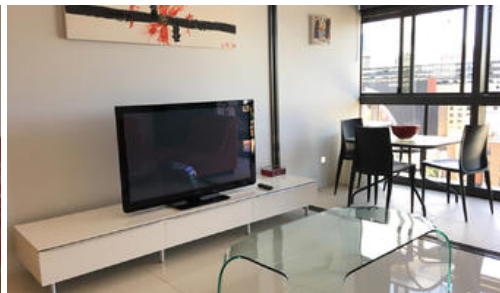




**8 Park Lane, Chippendale**



**WELL FURNISHED AND READY TO BE OCCUPIED APARTMENT**

**Please meet at our office 101/5 Carlton Street, Chippendale a few minutes before to register and inspect.**

One Central Park is inner city living at its best!

Rich in amenities, this Central Park development features:

- Luxury apartments with stainless steel appliances
- Security building with 24 hour concierge
- Fitness centre with pool, gymnasium & spa
- Bonus of a rooftop BBQ area & spa
- 6 star green rated development
- 5 level shopping centre with Woolworths
- City views from apartment
- Well furnished, ready to move in

For further information or to inspect, please call Nathan Sitou on 0466 110 429 or 9199 6555.

**\*\* images used maybe indicatives only\*\***

The above information provided has been furnished to us by the vendor/s. We have not verified whether or not that information is accurate and do not have any belief in one way or the other in its accuracy. We do not accept any responsibility to any person for its accuracy and do no more than pass it on. All interested parties should make and rely upon their own inquiries in order to determine whether or not this information is in fact accurate.

1 1

**Price**

L12/8 Park Lane | \$630  
PW

**Property  
Type**

rental

**Property ID**

3836

**Agent Details**

Nathan Sitou - 0466 110 429  
nathan@greenciff.com.au

**Office Details**

Greenciff Central Park Office  
101/5 Carlton Street Chippendale NSW  
2008 Australia  
02 9199 6555

**greenciff**  
Inner city specialists