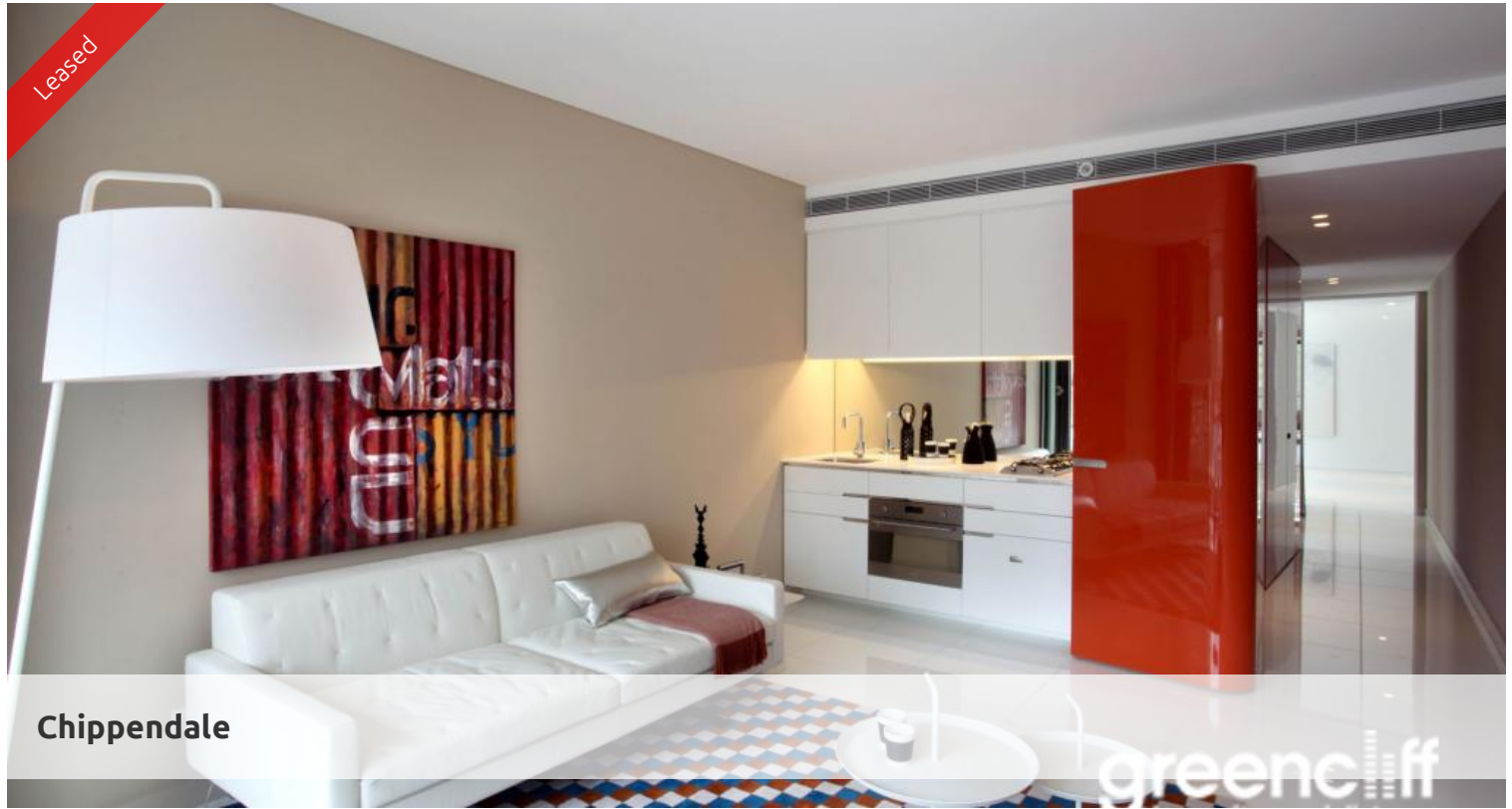


Leased



Chippendale

greenc^{||||}ff



SPACIOUS SUITE WITH LOGGIA/BALCONY

Well presented suite located on the 7th floor in West Tower. The apartment is funky and modern with a good size bedroom and living area.

- * Open plan kitchen and living area.
- * Modern kitchen with gas cooking, integrated dishwasher and full size fridge.
- * Funky bathroom with rain shower and separate laundry.
- * Good size living area with built-in robes.

Central Park is known for it's luxury living with 5 star facilities, concierge and the convenience or shopping, dinning and eating right at your door.

The above information provided has been furnished to us by the vendor/s. We have not verified whether or not that information is accurate and do not have any belief in one way or the other in its accuracy. We do not accept any responsibility to any person for its accuracy and do no more than pass it on. All interested parties should make and rely upon their own inquiries in order to determine whether or not this information is in fact accurate.

🛏 1 🚿 1

Price

L7/2 Chippendale Way
\$570.00 p/w

Property Type

Rental

Property ID

3807

Agent Details

Vicki Zhao - 0478 901 594
vicki@greenc^{||||}ff.com.au
Lieu Mai - 0415 797 525
lieu@greenc^{||||}ff.com.au

Office Details

Greenc^{||||}ff Sydney Kent St
Level 10/488 Kent Street Sydney NSW
2000 Australia
02 8823 8818

greenc^{||||}ff
Inner city specialists