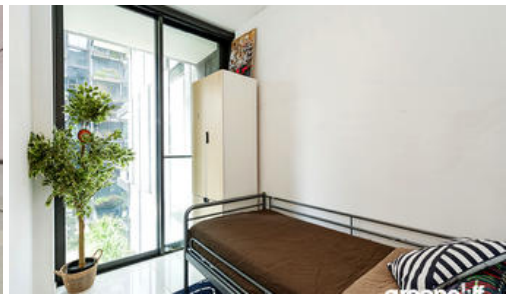
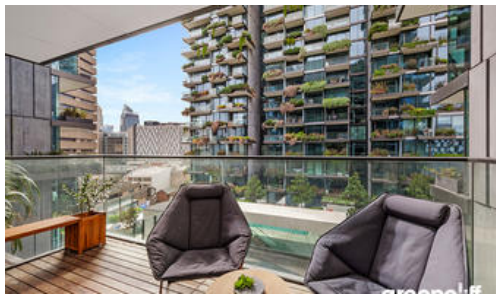




**801, 2 Chippendale Way, Chippendale**



## High rental yield two bedroom one bathroom

Where the world's tallest vertical garden wreathes the building's exterior facade, and organic interiors is complimented by sophisticated curves and glossy finishes throughout. Located in 'One Central Park's' West tower, this two bedroom apartment exudes luxury and sophistication. Offering the convenience of urban inner city living, you are surrounded by open spaces of lush parkland and shopping at your doorstep.

### Features

- Double-sized master bedroom w/ built-in robe
- Streamlined galley-style kitchen w/ steel gas appliances
- Concealed internal laundry, study enclave
- Luxurious bathroom w/ mirror & wood splashbacks
- Balcony w/ wooden deck & pool terrace outlook
- Timber flooring, ducted air conditioning, linen storage
- One secure car space, separate storage cage
- On-site concierge, secure video intercom & lift access
- 20m outdoor heated pool & spa, fully equipped commercial-grade gymnasium

Levy approximately \$2000 per quarter.

The above information provided has been furnished to us by the vendor/s. We have not verified whether or not that information is accurate and do not have any belief in one way or the other in its accuracy. We do not accept any responsibility to any person for its accuracy and do no more than pass it on. All interested parties should make and rely upon their own inquiries in order to determine whether or not this information is in fact accurate.

🛏️ 2 🏠 1 🚗 1

**Price**

**Property Type**

**Property ID**

**Floor Area**

Contact Agent

residential

3804

68 m<sup>2</sup>

### Agent Details

William Chen ( Yuanyuan Chen) - 0430

026 436 william@greenciff.com.au

Danny Yeung ( Hei Yeung) - 0451 836

388 danny@greenciff.com.au

### Office Details

Greenciff Central Park Office

101/5 Carlton Street Chippendale NSW

2008 Australia

02 9199 6555

**greenciff**  
Inner city specialists