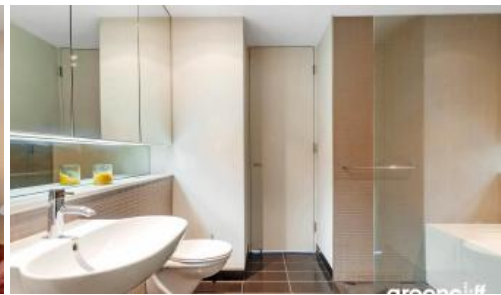




811, 1 Sterling Cct, Camperdown



Abundance of Space and Comfort Luxury and Convenience

Sleek design, beautiful finishes and a generous living area leading seamlessly on to a huge loggia with gas, electricity and water fittings that makes for the perfect entertaining space.

Stunning, expansive, clear district views from the corner position on the 8th floor. Resort style living with first class amenities including an indoor and outdoor pool as well as 2 gymnasiums.

- Well designed functional floor plan with dual access bathroom
- Huge indoor outdoor loggia area with water, power and gas fittings
- Ducted air conditioning
- Mini mart, cafe and restaurant on site
- Stroll to a huge selection of dining and entertaining options
- University of Sydney and Royal Prince Alfred Hospital near by
- 50m outdoor pool 25m indoor pool 2 gymnasiums
- Building management and 24hour security on site
- Car space with large storage cage

🛏 1 🚿 1 🚗 1

Price

SOLD

Property Type

Residential

Property ID

3770

Agent Details

Emlyn Walters - 0405 606 025
emlyn@greenciff.com.au

Office Details

Greenciff Sydney Kent St
Level 10/488 Kent Street Sydney NSW
2000 Australia
02 8823 8818

greenciff
Inner city specialists

The above information provided has been furnished to us by the vendor/s. We have not verified whether or not that information is accurate and do not have any belief in one way or the other in its accuracy. We do not accept any responsibility to any person for its accuracy and do no more than pass it on. All interested parties should make and rely upon their own inquiries in order to determine whether or not this information is in fact accurate.