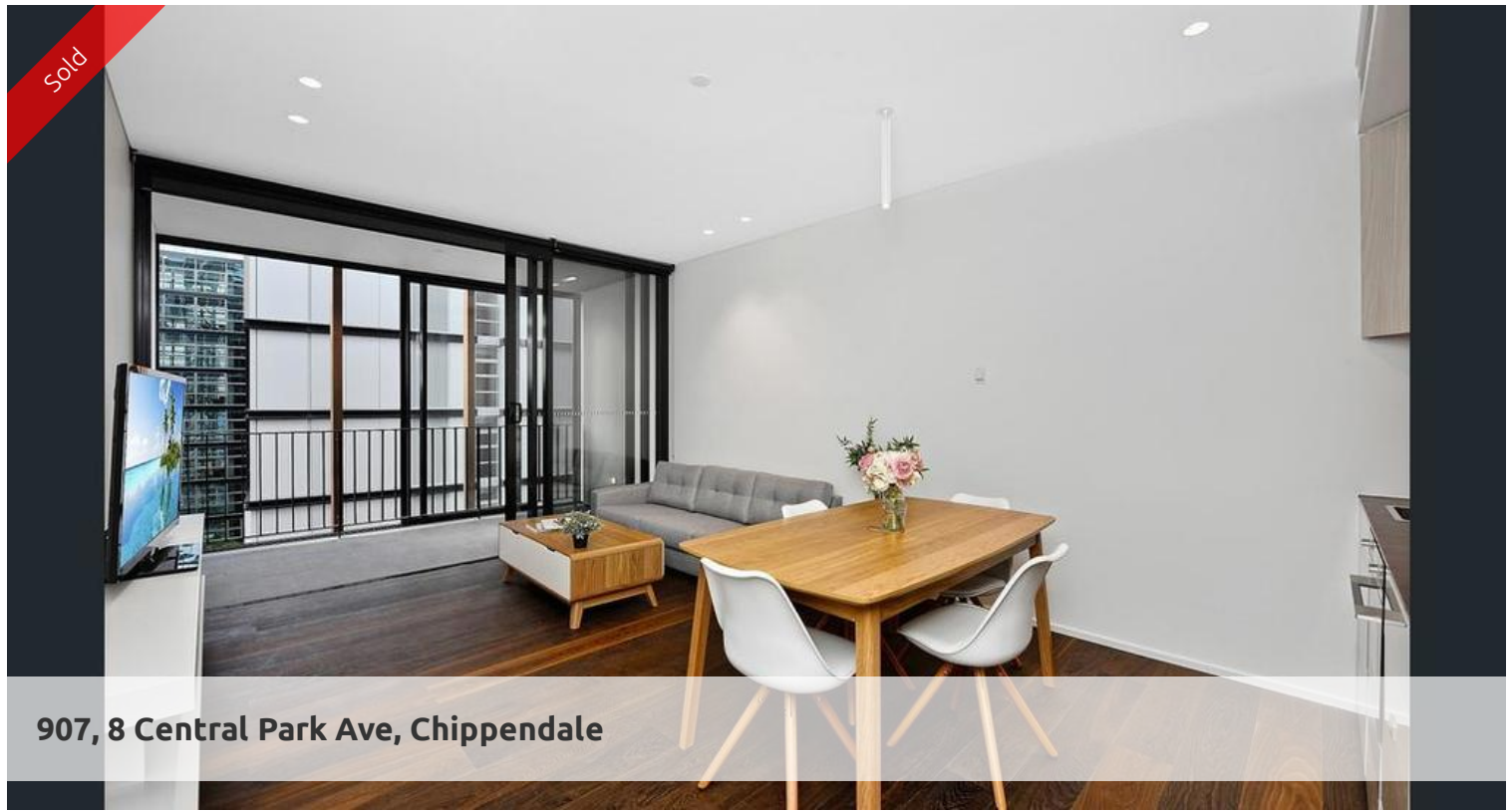


Sold



907, 8 Central Park Ave, Chippendale



MASSIVE NORTH FACING 1 BEDROOM SUITE

Massive one bedroom suite for sale, perfect for any owner occupiers or investors. Apartment 907 is located on the 9th floor of near new Connor building.

This one bedroom plus study nook apartment is 58sqm in size complete with quality finishes throughout. Facing North with an abundance of sunlight, this apartment has ducted air-conditioning and has walnut colored timber flooring throughout. The kitchen cabinetry has a built-in refrigerator, microwave and dishwasher.

Other features of this suite include:

- combined washing machine and dryer
- built-in wardrobes in bedroom
- roller blinds
- study nook
- basement storage
- security alarm

The Connor building is pet friendly and has concierge services. Residents of building also enjoy access to cardio room, lounge area and a rooftop garden with beautiful views of Chippendale Green Park.

Located on the corner of O'Connor Street and Central Park Avenue, it gives easy access to bus and train services. Less than 5 minutes walk away to the Central Train

The above information provided has been furnished to us by the vendor/s. We have not verified whether or not that information is accurate and do not have any belief in one way or the other in its accuracy. We do not accept any responsibility to any person for its accuracy and do no more than pass it on. All interested parties should make and rely upon their own inquiries in order to determine whether or not this information is in fact accurate.

🛏 1 🗺 1

Price

SOLD

Property Type

residential

Property ID

3613

Agent Details

Danny Yeung (Hei Yeung) - 0451 836 388 danny@greenciff.com.au
William Chen (Yuanyuan Chen) - 0430 026 436 william@greenciff.com.au

Office Details

Greenciff Central Park Office
101/5 Carlton Street Chippendale NSW
2008 Australia
02 9199 6555

greenciff
Inner city specialists