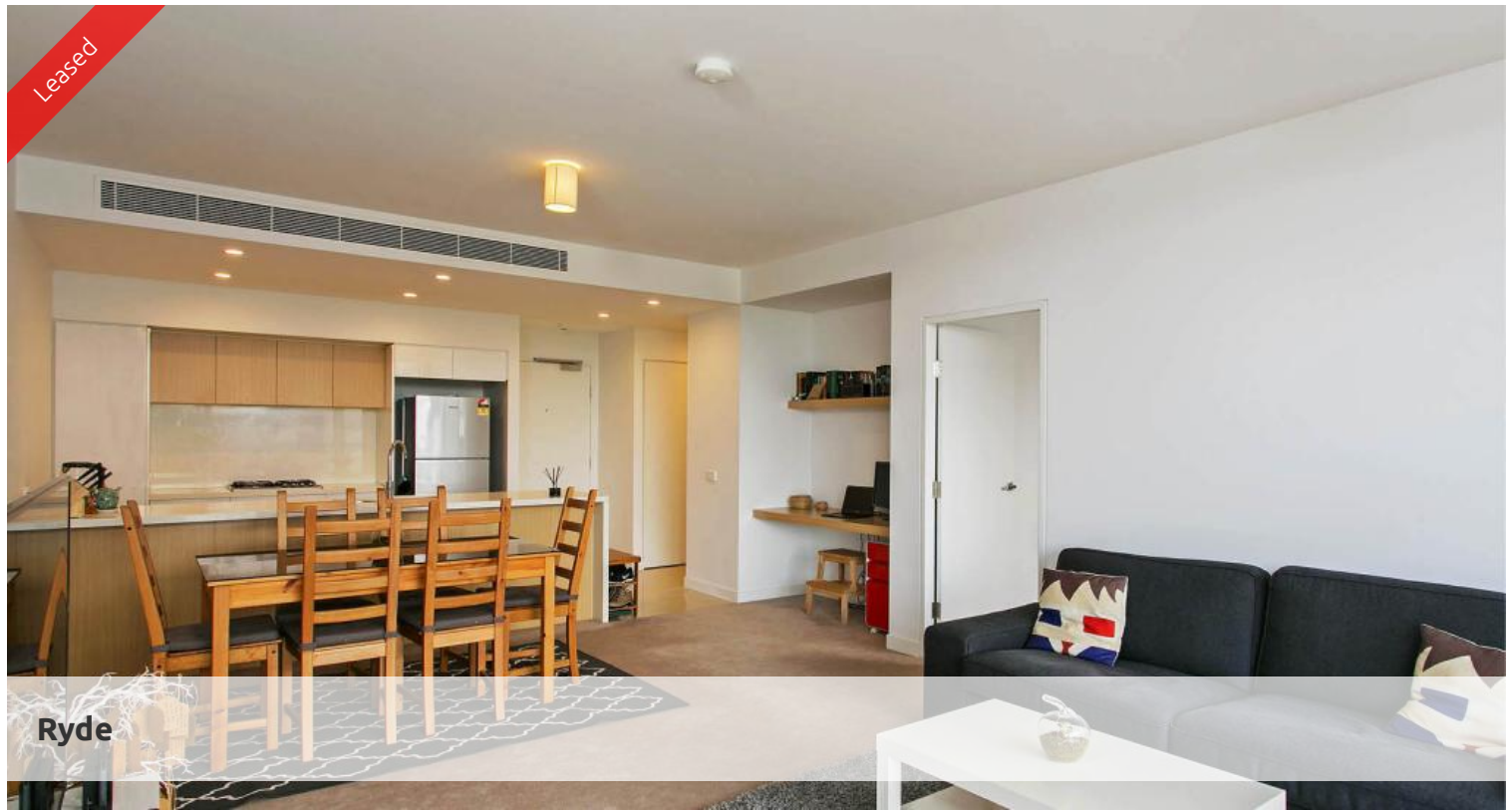


Leased



Ryde



## East facing 6th Floor Apartment with Spectacular Views

Welcome to this 6th floor, 2 bedroom, 2 bathroom 1 car space apartment with spectacular Sydney CBD views and Parramatta River views

Features include

- 18sqm entertainers balcony with stunning views
- Large open plan kitchen with Blanco stainless steel appliances – including gas cooking, dishwasher and microwave
- Combined lounge and dining area leading to balcony
- 2 spacious bedrooms, both with built in wardrobes main with walk in robe and ensuite
- 2.7 metre ceilings
- Internal laundry with dryer
- Ducted air conditioning throughout
- Separate study nook
- Parking and storage

All of this within easy walking distance to transport, parks, local schools and the Putney Hill village

To inspect this wonderful apartment, please call Eugene Ganke on 0404 010 555

The above information provided has been furnished to us by the vendor/s. We have not verified whether or not that information is accurate and do not have any belief in one way or the other in its accuracy. We do not accept any responsibility to any person for its accuracy and do no more than pass it on. All interested parties should make and rely upon their own inquiries in order to determine whether or not this information is in fact accurate.

🛏 2 🚿 2 🚗 1

**Price**

**Property Type**

**Property ID**

DEPOSIT TAKEN

Rental

3418

### Agent Details

William Chen - 0430 026 436

[william@greenciff.com.au](mailto:william@greenciff.com.au)

Michelle Kilala - 0419 777 239

[michelle@greenciff.com.au](mailto:michelle@greenciff.com.au)

### Office Details

Greenciff Sydney Kent St

Level 10/488 Kent Street Sydney NSW

2000 Australia

02 8823 8818

**greenciff**  
Inner city specialists