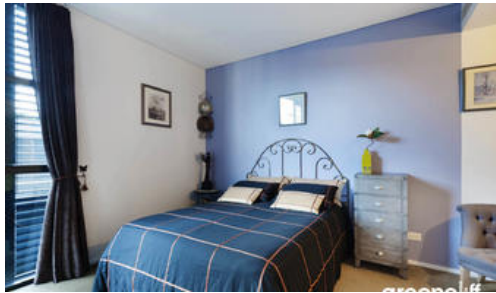
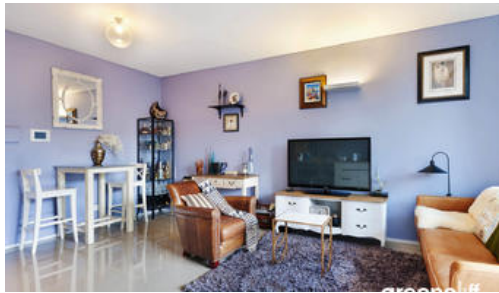


Leased



8 Park Lane, Chippendale



STYLISH UNFURNISHED ONE BEDROOM APARTMENT

Please meet at our office 5 Carlton street, Chippendale a few minutes before to register and inspect.

One Central Park is inner city living at its best!

Enjoy the convenience of shopping, entertainment, dining and transport right at your doorstep. Built around a beautiful park, One Central Park is the perfect combination of luxury meeting nature.

Rich in amenities, this Central Park development features:

- Unfurnished one bedroom apartment with open balcony
- Luxury apartment with stainless steel appliances
- Security building with 24 hour concierge
- Fitness centre with pool, gymnasium & spa
- Bonus of a rooftop BBQ area & spa
- 6 star green rated development
- 5 level shopping centre with Woolworths

For further information or to inspect, please call Nathan Sitou on 0466 110 429 or 9199 6555.

The above information provided has been furnished to us by the vendor/s. We have not verified whether or not that information is accurate and do not have any belief in one way or the other in its accuracy. We do not accept any responsibility to any person for its accuracy and do no more than pass it on. All interested parties should make and rely upon their own inquiries in order to determine whether or not this information is in fact accurate.

1 bed 1 bath

Price L7/8 Park Lane | \$620 PW

Property Type rental

Property ID 3148

Agent Details

Nathan Sitou - 0466 110 429

nathan@greenciff.com.au

Office Details

Greenciff Central Park Office
101/5 Carlton Street Chippendale NSW
2008 Australia
02 9199 6555

greenciff
Inner city specialists