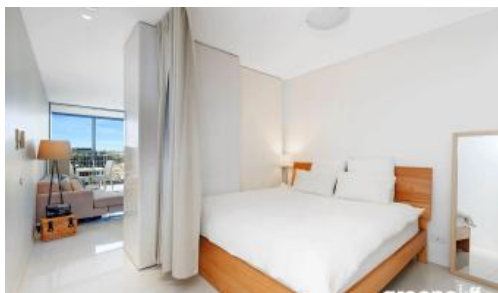


Sold



**Apartment 1218, 18 Park Lane, Chippendale**



## ATTENTION BUYERS, APARTMENT WORTH INSPECTING

This beautifully presented apartment in 18 Park Lane is designed with both luxury and flexible living with modern fixtures throughout. The highly functional kitchen, living and bathroom is perfect for investors and owner occupiers alike.

Within close proximity to Central Station, UTS, Sydney University and shopping this apartment features:

- High floor to glass ceiling
- Private enclosed balcony
- Built-in wardrobes
- Secure building with 24-hour concierge services
- Pool, gym & spa
- Pets allowed

Outgoings per quarter (Approx.):

- Strata Fees \$1,400
- Council Rates \$250
- Water Rates \$250

Car space is available for rent \$50 per week

For more information or to arrange a viewing please contact William Chen of Greenclyff Realty on 0430 026 436

🛏 1 🚿 1

**Price**  
**Property Type**  
**Property ID**

SOLD  
Residential  
3082

### Agent Details

William Chen - 0430 026 436  
william@greenclyff.com.au

### Office Details

Greenclyff Central Park Office  
101/5 Carlton Street Chippendale NSW  
2008 Australia  
02 9199 6555

**greenclyff**  
Inner city specialists

The above information provided has been furnished to us by the vendor/s. We have not verified whether or not that information is accurate and do not have any belief in one way or the other in its accuracy. We do not accept any responsibility to any person for its accuracy and do no more than pass it on. All interested parties should make and rely upon their own inquiries in order to determine whether or not this information is in fact accurate.