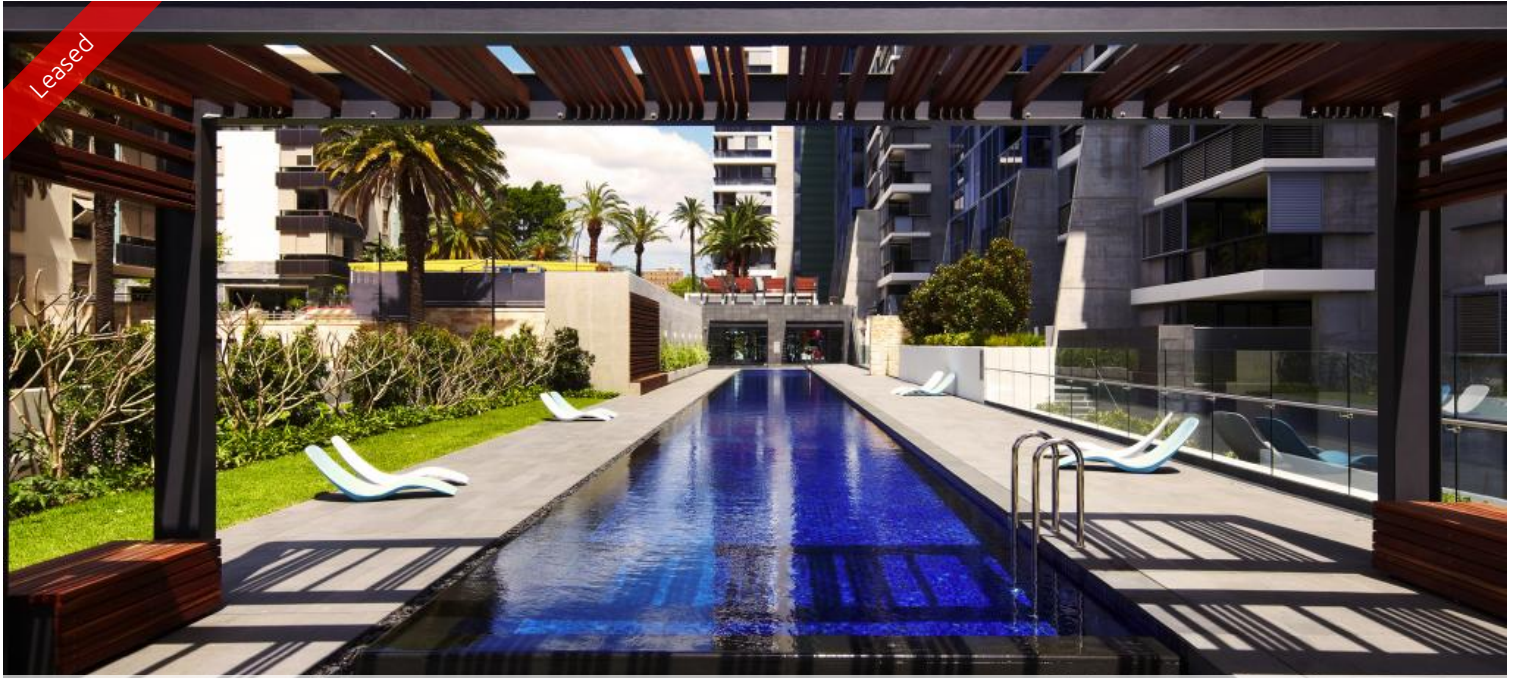
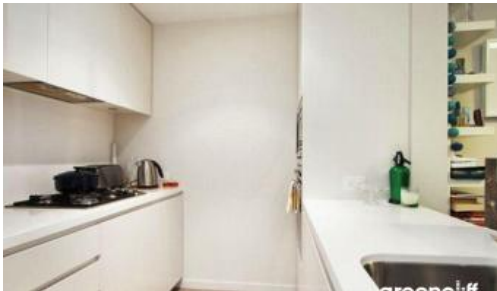


Leased



Camperdown



ONE BEDROOM AVAILABLE IN TRIO

Occupying an elevated site on the corner of Booth Street and Pyrmont Bridge Road, Camperdown, Trio is a bold and brilliant addition to the landscape.

Trio combines the cosmopolitan culture and accessibility of the Inner West with all the benefits of living spaces designed for the most modern of lifestyles. Sculptural gardens infiltrate the foyer, meshing the building with its environment. Inside the story is equally modern, loggias which enhance and add flexibility to the open plan.

Apartment features: -

- Spacious living area boasting tranquil leafy outlook
- Ultra modern open plan kitchen with gas cook top and dishwasher
- Private loggia with timber decking, ideal for alfresco entertaining
- Large bedroom with built-in wardrobe, light and airy throughout
- Undercover security car space
- Ducted air conditioning
- No storage cage included

Enjoy unlimited access to your choice of a 50 metre outdoor or 25m indoor pool and two gymnasiums. The complex also has 24 hour security, a Japanese restaurant, cafes & convenience store.

Trio is just a 10 minutes bus ride to Sydney CBD, with major universities, RPA Hospital, Broadway Shopping Centre, Annandale shopping village and transport all within walking distance.

For more information or arrange for private viewing, please contact Michelle Vejar on 0419 777 239 or 8262 8262.

**Please note, images used maybe indicatives only.

1 1 1

Price

DEPOSIT TAKEN -
INSPECTION CANCELLED

**Property
Type**

Rental

**Property
ID**

2953

Agent Details

Michelle Kilala - 0419 777 239
michelle@greenciff.com.au

Office Details

Greenciff Camperdown Office
Shop 1 1 Sterling Cct Camperdown NSW
2050 Australia
02 8262 8262

greenciff
Inner city specialists