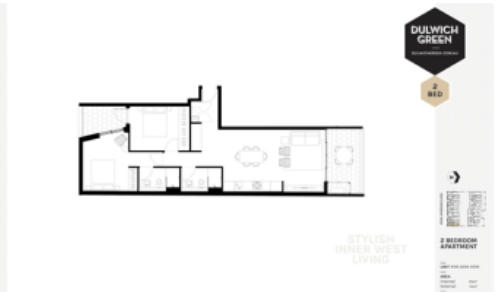


Sold

**B109, 801-807 New Canterbury Rd, Dulwich Hill**



**2 BED APARTMENTS WITH 2 BALCONIES \$795,000**

**CHOOSE THE BEST THE INNER WEST HAS TO OFFER**

North facing over court yard garden.

Level 4 apartments and penthouses are now released – north facing, sweeping district views, huge terraces, great lifestyle options.

Dulwich Green is a new contemporary development of 1, 2 and 3 bedroom light-filled and spacious architecturally designed apartments set amongst lush gardens, trees and courtyards. Located in Dulwich Hill within Sydney's thriving inner west, a bustling café lifestyle is right on your doorstep with easy transport connections to the city; only an 8-minute walk to the train station and 12-minute walk to the new light rail stop.

Dulwich Green is made up of two main buildings set amongst substantial landscaped gardens, courtyards and trees. It's a vibrant and contemporary residential development made of robust materials designed for low maintenance that will endure over time. The masonry facade has been designed to connect with Dulwich Hill's twentieth century architecture and masonry heritage of the inner west.

Outdoor lifestyle and recreation are part of life in Dulwich Hill. While the area has transformed from its earlier days of orchards, market gardens and nurseries, a selection of parks and gardens still remains.

Cycleways stretch along the Cooks River up to Ewen Park, Yeo Park, Johnson Park and Arlington Reserve are all within walking distance from Dulwich Green.

2 2 1

<b>Price</b>	SOLD for \$795,000
<b>Property Type</b>	Residential
<b>Property ID</b>	2315

#### Agent Details

Christina Chong - 0456 617 186  
christina@greenciff.com.au  
David Butt - 0404 070 456  
david@greenciff.com.au

#### Office Details

Greenciff Sydney Kent St  
Level 10/488 Kent Street Sydney NSW  
2000 Australia  
02 8823 8818

**greenciff**  
Inner city specialists