

Sold

Photo Not Available

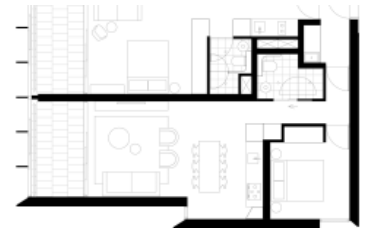


202, 8 Central Park Ave, Chippendale

Photo Not Available



Photo Not Available



URGENT SALE 2 Bed Dual Key with park view

A rare find, a luxurious 2 bed dual key apartment in Connor with excellent views to the Park. This spacious apartment has excellent rental yield or is great for flexible occupation.

Enjoy the convenience of shopping, entertainment, dining and transport right at your doorstep. Built around a beautiful park, One Central Park is the perfect combination of luxury meeting nature.

Rich in amenities, this development features:

- Luxury kitchens with stainless steel appliances
- Secure building with 12-hour concierge
- 6 star green rated development
- 5 level shopping centre with Woolworths for all your daily shopping needs

Outgoings per quarter (approx.):

- Strata fees \$2,200
- Council rates \$250
- Water rates \$150

Expected completion for Connor is February 2017.

For more information or to arrange a viewing, please contact William Chen of Greencliff Realty on 0430 026 436

Disclaimer - Photos are indicative for this property only

 2  2  1

Price

SOLD

Property Type

Residential

Property ID

2076

Agent Details

William Chen - 0430 026 436

william@greencliff.com.au

Office Details

Greencliff Central Park Office

101/5 Carlton Street Chippendale NSW

2008 Australia

02 9199 6555

greenc**ff**
Inner city specialists