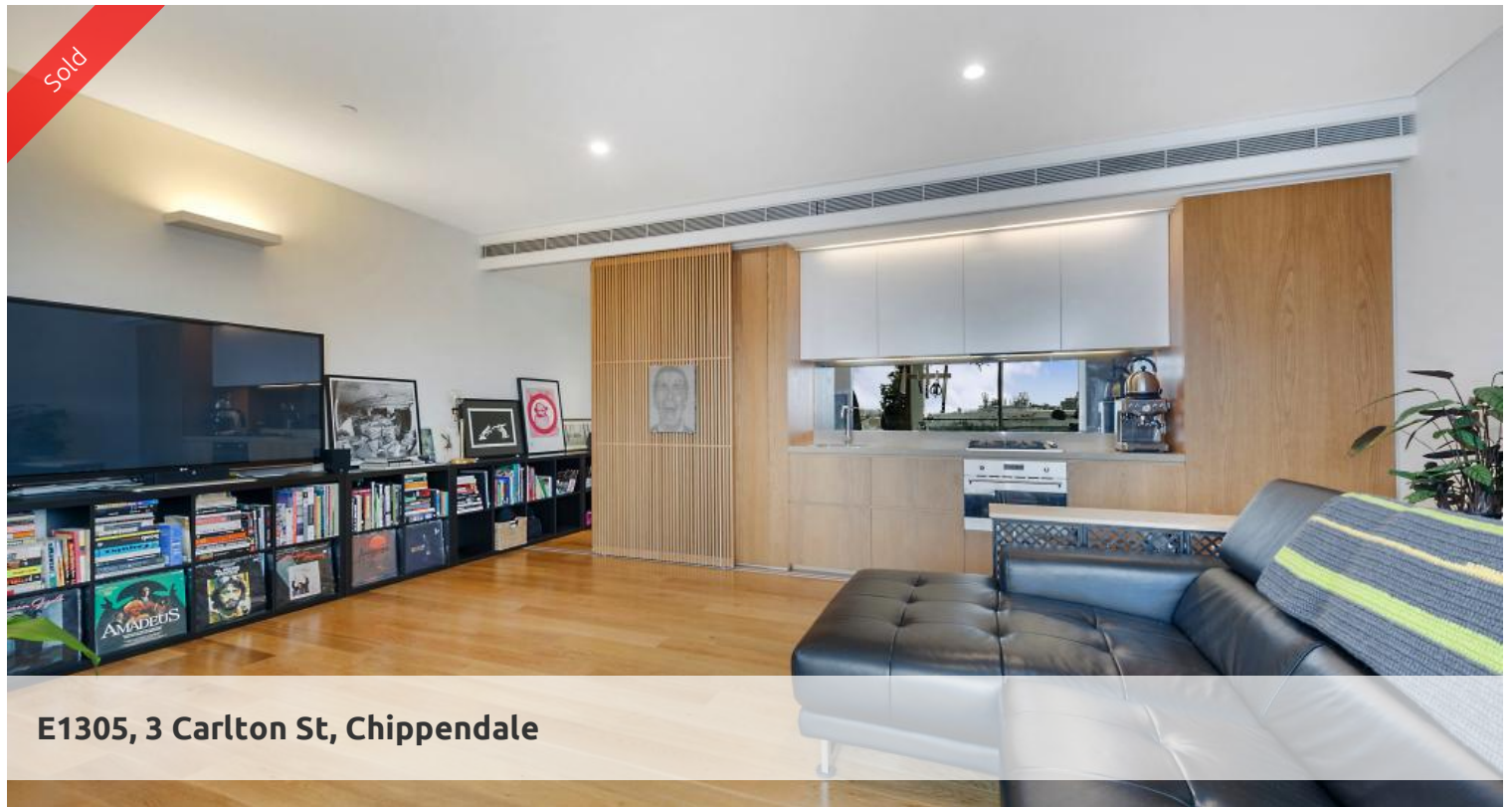


Sold



**E1305, 3 Carlton St, Chippendale**



### NORTH EAST FACING WITH AMAZING VIEWS!

Your chance to own an amazing property in a landmark development, The One Central Park. This is a sunshine filled apartment located on level 13 offers stylish living and spectacular views of the CBD to the North and East. Perfect for an ideal home.

Conveniently located across the road from UTS and a short stroll to a collection of boutiques shops, galleries, cafes, restaurants & bars right at your doorstep.

This property features:

- High floor-to-ceiling glass
- Enclosed loggia/ balcony
- Streamlined galley-style kitchen w/ steel gas appliances
- Concealed internal laundry
- Timber flooring
- Built-in wardrobes
- Ducted air conditioning
- Once secure car space
- Storage cage
- 24 hour concierge
- Secure video intercom & lift access
- 20m outdoor heated pool & spa
- Fully equipped gymnasium
- Pets allowed

Outgoings per quarter (approx.):

- Strata Fees \$1,915
- Council Rates \$250
- Water Rates \$225

🛏 1 📶 1 🚗 1

**Price** SOLD for \$1,105,500  
**Property Type** Residential  
**Property ID** 1979

#### Agent Details

William Chen - 0430 026 436  
william@greenciff.com.au

#### Office Details

Greenciff Central Park Office  
101/5 Carlton Street Chippendale NSW  
2008 Australia  
02 9199 6555

**greenciff**  
Inner city specialists