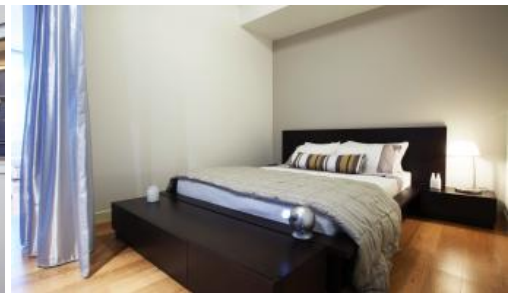




2314, 101 Bathurst St, Sydney



SMART STUDIO SUITE IN THE CENTER OF SYDNEY CBD

Positioned on the 23rd floor of the world famous Lumiere Residences Sydney is this immaculate studio suite. At approximately 45sqm in size, this apartment is perfect for the first home buyer or astute investor.

The apartment accommodates a queen size bedroom with reverse cycle air-conditioning and a built-in wardrobe with plenty of storage. The designer kitchen offers eat-in ability, stainless steel gas appliances, dishwasher and a full sized built in fridge. The bathroom features high quality finishes throughout and there is a separate internal laundry.

A very secure building with 24 hour concierge and intercom entry.

Residents of Lumiere Sydney have access to the Club Lumiere:

- 50 metre swimming pool with spa, sauna and a steam room
- World class gymnasium
- 2 theatrettes
- Meeting rooms
- Function rooms
- 24 hour concierge and security

Set amid cafes, restaurants, shops and the cinema, it is an easy stroll to CBD & Townhall Station at your doorstep.

Outgoings per quarter (approx.):

- Strata Fees \$900
- Council Rates \$230
- Water Rates \$180

1 1

Price
Property Type
Property ID

SOLD for \$738,000
Residential
1955

Agent Details

William Chen - 0430 026 436
william@greenciff.com.au

Office Details

Greenciff Sydney Kent St
Level 10/488 Kent Street Sydney NSW
2000 Australia
02 8823 8818

greenciff
Inner city specialists