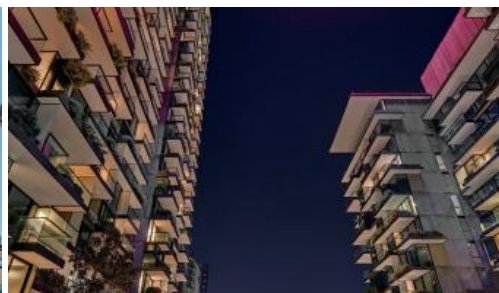


Sold

greenciff  
Inner city specialists

E1408, 3 Carlton Street, Chippendale



## Large sun drenched one bedroom and study in Iconic Building

One Central Park is the iconic award winning building that encapsulates all that Central Park has to offer: bold, beautiful and globally significant. Designed by award-winning Parisian architect Jean Nouvel with vertical gardens created by French artist Patrick Blanc.

This is a rare chance to own a highly sought after one bedroom plus study apartment in the Iconic One Central Park East Tower. Facing East with city views, bathed in morning light this property is a must to inspect.

Convenient living with access to four levels of retail and food court bringing superior shopping and services to this urban village on the city fringe and the newly opened chic and stylish Kensington Street right at your doorstep offering a selection of cafes, restaurants and retail outlets. Easy access to public transport, universities, hospitals and the city on its door step.

### Features:

- Air conditioning
- Storage cage
- 24 hour concierge
- Pool
- Gym
- Spa

The above information provided has been furnished to us by the vendor/s. We have not verified whether or not that information is accurate and do not have any belief in one way or the other in its accuracy. We do not accept any responsibility to any person for its accuracy and do no more than pass it on. All interested parties should make and rely upon their own inquiries in order to determine whether or not this information is in fact accurate.

1 1 1 1

**Price**

SOLD

**Property Type**

Residential

**Property ID**

1926

### Agent Details

Emlyn Walters - 0405 606 025  
emlyn@greenciff.com.au

### Office Details

Greenciff Camperdown Office  
Shop 1 1 Sterling Cct Camperdown NSW  
2050 Australia  
02 8262 8262

greenciff  
Inner city specialists