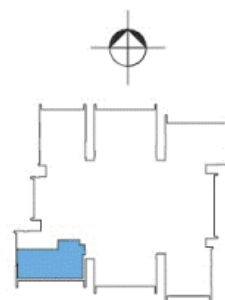
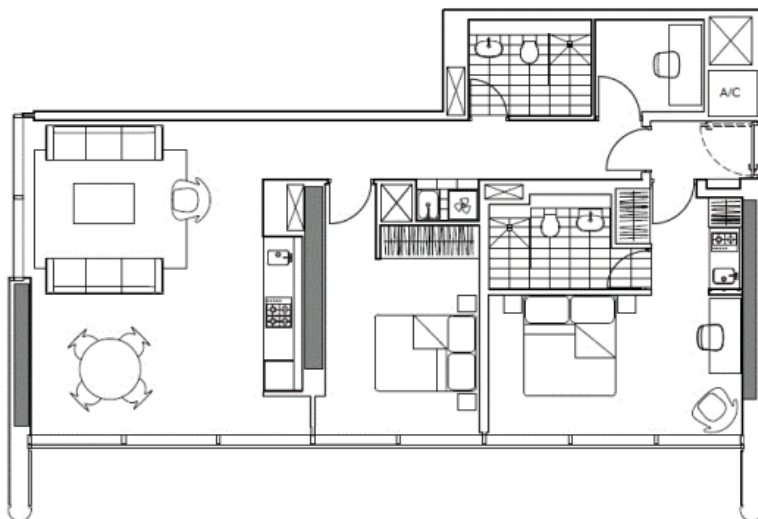


Sold

LUMIERE
RESIDENCES

Apartment 1912

1912.2012.2112.2212.2312.2412.
2512.2612.2712.2812.2912.
Area = 100m2



2712, 101 Bathurst Street, Sydney



Dual Key Apartment in The Award Winning Lumiere Residences

Live in while generating income in a stunning Lumiere Residences 27th floor dual-key apartment designed by world-acclaimed architects Foster & Partners.

Centrally located within walking distance to entertainment, dining and the CBD, your choice of lifestyle includes a 1-BEDROOM apartment plus study, generous living areas, kitchen, laundry, parking and storage lot, or, a separate self-contained, fully-furnished STUDIO apartment with kitchenette and spacious bathroom.

With Concierge/valet services to attend to your mundane dry-cleaning and laundry needs, you will have more time to relax and enjoy unparalleled Club Lumiere facilities. The secluded South-west corner cosy aspect from both apartments must be seen to be appreciated.

Exceptional quality of finishes throughout, including Smeg stainless-steel appliances, stone bench tops, tiled floors and grand bathrooms. Features include, reverse cycle a/c, floor to ceiling windows offering plenty of natural light and a single secure car space. Situated in the heart of the city and within walking distance to all amenities, this apartment is sure to impress!

Residents of Lumiere Sydney have access to:

- 50 metre swimming pool with spa, sauna and steam room
- World class gymnasium
- 2 theatres
- Meeting rooms
- 24 hour concierge

Outstanding

2 2 1

Price

SOLD

Property Type

Residential

Property ID

1924

Agent Details

William Chen - 0430 026 436
william@greenciff.com.au

Office Details

Greenciff Sydney Kent St
Level 10/488 Kent Street Sydney NSW
2000 Australia
02 8076 8006

greenciff
Inner city specialists