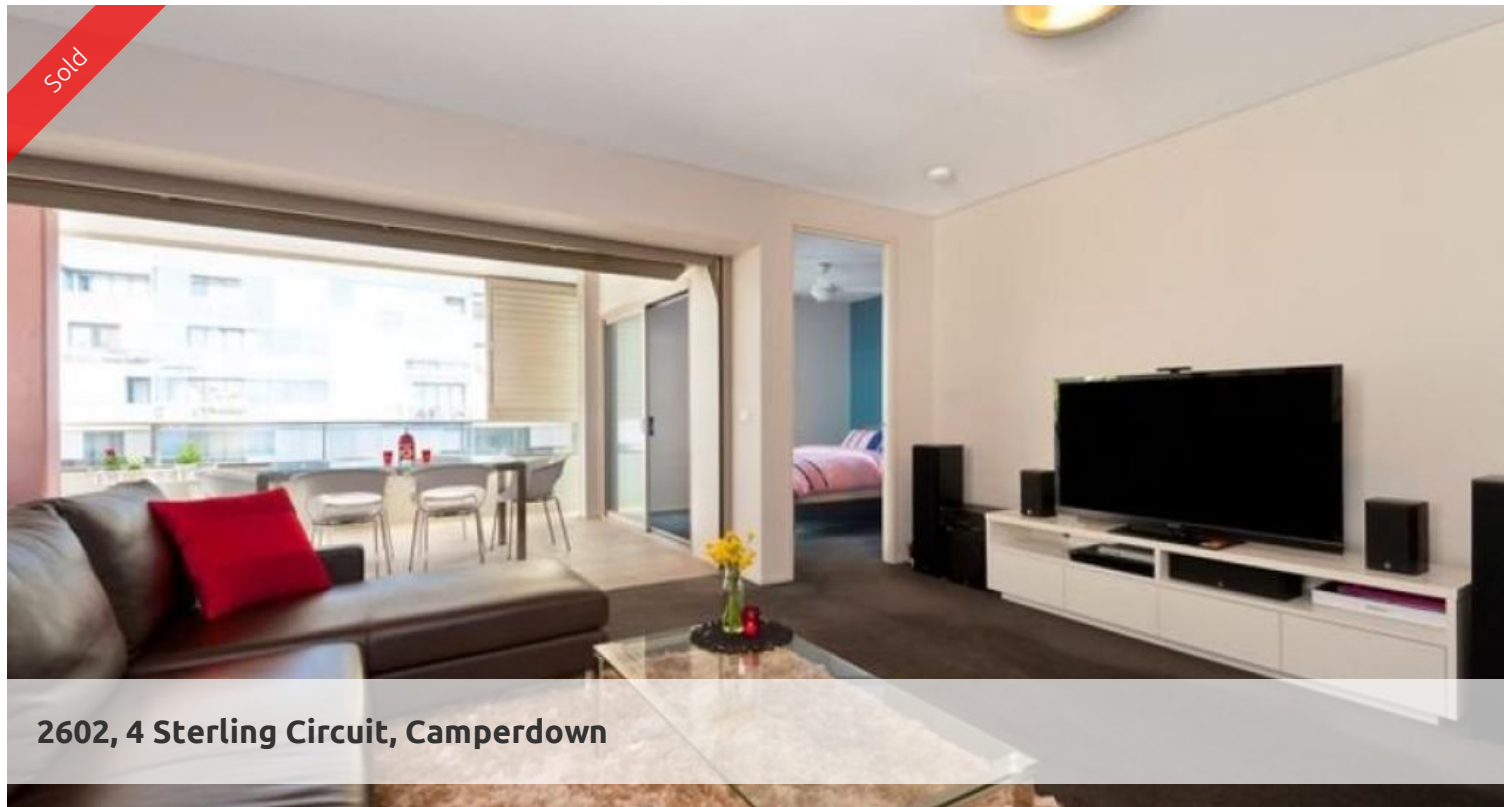


Sold



2602, 4 Sterling Circuit, Camperdown



### Urban glamour, resort style living in lifestyle hub

Resounding space and a seamless in/outdoor blend are on display in this impressive apartment, boasting a premium corner position on the 6th floor of Vie 2. Filled with natural light, displaying a host of quality finishes, superb design ensures outstanding spaces for living and entertaining complimented by a wide array of resort style amenities. Discover a lifestyle of contemporary style and absolute convenience.

- Elevated, leafy outlook across to the stunning pool and surrounds
- Spacious, open plan living areas flow to the large alfresco loggia
- Sophisticated and stylish, the galley style kitchen is well appointed
- Clever additions include the integrated laundry and study niche
- The over-sized master extends to the loggia and boasts BIRs
- The two way ensuite bathroom boast luxury Calcutta marble finishes
- A secure car space plus swift lift access are desirable extras
- Centrally placed just steps to the 2 pools, 2 gyms, café and restaurant

Enjoying a host of on-site amenities including beautifully maintained grounds and relaxation areas, City Quarter is perfectly placed to satisfy every whim, just an easy stroll to local cafes and eateries, shops and city direct bus.

Strata \$1,078.83 (per quarter)

Council \$187.00

Water \$168.80

The above information provided has been furnished to us by the vendor/s. We have not verified whether or not that information is accurate and do not have any belief in one way or the other in its accuracy. We do not accept any responsibility to any person for its accuracy and do no more than pass it on. All interested parties should make and rely upon their own inquiries in order to determine whether or not this information is in fact accurate.

1 bed 1 bath 1 car

<b>Price</b>	SOLD
<b>Property Type</b>	Residential
<b>Property ID</b>	1856
<b>Land Area</b>	0 m2

### Agent Details

William Chen - 0430 026 436  
william@greenciff.com.au

### Office Details

Greenciff Sydney Kent St  
Level 10/488 Kent Street Sydney NSW  
2000 Australia  
02 8823 8818

**greenciff**  
Inner city specialists