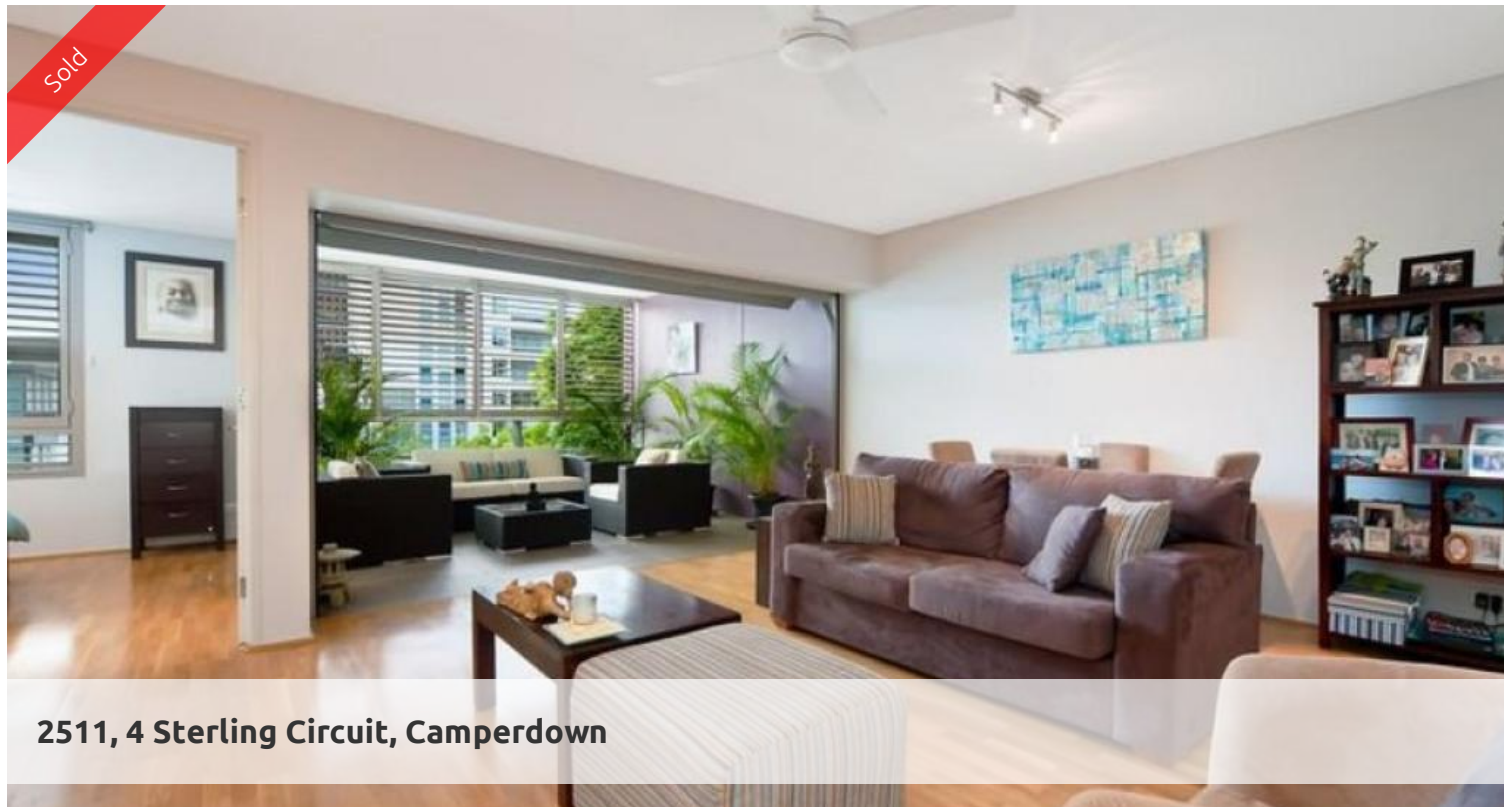


Sold



2511, 4 Sterling Circuit, Camperdown



Designer executive living, urban luxury, outstanding amenity

Located in the vibrant City Quarter community, this spacious 5th level apartment is an outstanding demonstration of innovative design creating a spectacular living environment enhanced by a host of superb amenities. Featuring the sought after signature design this luxurious inner city pad displays a spacious open plan floor plan enjoying a superb in/outdoor flow wrapped around the unique central loggia.

Perfectly located with eastern outlook across courtyard garden
Spacious open plan living areas extend to the superb loggia
A glass wall fully retracts into the roof line for seamless living
The impressive kitchen features stone tops and Smeg appliances
Retreat to the sumptuous master with direct access to the loggia
The ensuite bath boasts European design and marble finishes
Extras include a convenient concealed laundry and gas cook top
Enjoy swift lift access from the single secure car space
2 pools, 2 gyms, café and restaurant, 24hr security monitoring

The award winning development offers the finest in community living with an abundance of green space, resort style amenity and an unbeatable location, just minutes to the CBD.

Strata is \$1001 per quarter
Council is \$187.70 per quarter
Water is \$168.80 per quarter

1 bed 1 bath 1 car

| | |
|----------------------|-------------|
| Price | SOLD |
| Property Type | Residential |
| Property ID | 1838 |
| Land Area | 0 m2 |

Agent Details

William Chen - 0430 026 436
william@greenciff.com.au

Office Details

Greenciff Sydney Kent St
Level 10/488 Kent Street Sydney NSW
2000 Australia
02 8076 8006

greenciff
Inner city specialists

The above information provided has been furnished to us by the vendor/s. We have not verified whether or not that information is accurate and do not have any belief in one way or the other in its accuracy. We do not accept any responsibility to any person for its accuracy and do no more than pass it on. All interested parties should make and rely upon their own inquiries in order to determine whether or not this information is in fact accurate.