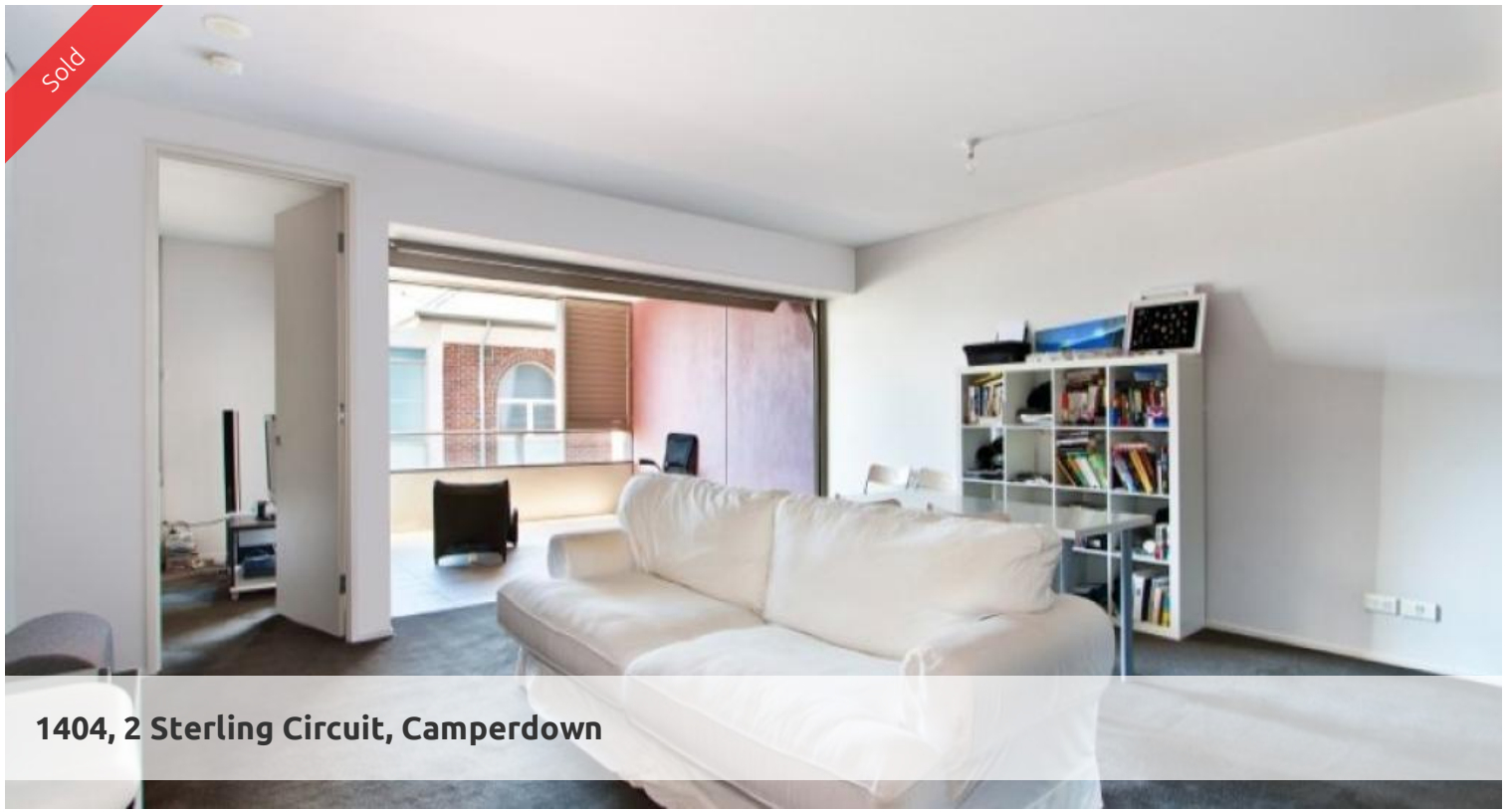


Sold



## 1404, 2 Sterling Circuit, Camperdown



### VIE: SPACE & DESIGN, VIEWS OF THE VILLAGE GREEN

Appealing to modern professional lifestyle, this spacious one bedroom offers an east facing position in the sought after 'City Quarter' development in the heart of Camperdown. With an assortment of inner west conveniences nearby along with five star facilities on-site.

Elegant modern combined living and dining  
15sqm enclosable loggia, perfect for the at home entertainer  
Gas kitchen with Smeg appliances and corian bench top  
Bedroom with built-ins with balcony access  
Sleek modern bathroom with designer fittings  
Separate concealable internal laundry area  
Secure basement parking

High end resort style facilities, 25 meter indoor pool + 50 meter infinity lap pool, choice of two gyms, 24/7 on-site security, cafes, restaurants and convenience store.

Spoil yourself to Inner Wests best in food and entertainment options. Close proximity to Universities, RPAH, Broadway Shopping Centre and the CBD.

Strata - \$1078.85 per quarter

Council - \$722.00 per annum

Water - \$168.60 per quarter

The above information provided has been furnished to us by the vendor/s. We have not verified whether or not that information is

🛏 1 🌐 1 🚗 1 🏠 75m<sup>2</sup>

<b>Price</b>	SOLD
<b>Property Type</b>	Residential
<b>Property ID</b>	1805
<b>Land Area</b>	75 m <sup>2</sup>
<b>Floor Area</b>	55.74 m <sup>2</sup>

#### Agent Details

William Chen - 0430 026 436  
william@greycliff.com.au

#### Office Details

Greycliff Sydney Kent St  
Level 10/488 Kent Street Sydney NSW  
2000 Australia  
02 8076 8006

**greenc**  **ff**  
Inner city specialists