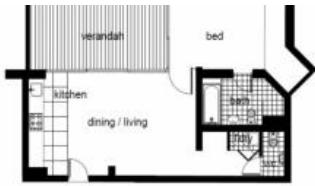


Sold



23, 20 Pyrmont Bridge Road, Camperdown



North Facing Warehouse Apartment, Venables

This chic secure apartment enjoys a prime Inner West setting within the historic warehouse building 'Venables' positioned on the top floor, the property boasts a peaceful Northerly aspect overlooking a lush courtyard.

- Combined lounge and dining opening to enclosed north facing veranda
- Floor to ceiling sliding glass doors allows for ventilation and natural light
- Oversized bedroom, built-ins and en-suite
- Gourmet gas kitchen with Smeg appliances, marble tops
- Reverse cycle air conditioning, high ceilings
- Concealed laundry, separate w/c
- Strata titled, boutique building
- Secure basement parking

Residents enjoy all the benefits of City Quarter's established community, including an indoor heated swimming pool and gymnasium and a 50m outdoor pool, café, restaurant.

Absolute convenience located between Glebe and Annandale Village, CBD, University, Broadway Shopping Centre, theatres, cafes and vibrant shopping. Royal Price Alfred Hospital.

Strata \$1237.10 p/q, all figures are approximate
Council \$180.50 p/q
Water \$153.05 p/q

🛏 1 🗺 1 🚗 1 📏 74 m²

Price	SOLD
Property Type	Residential
Property ID	1800
Land Area	74 m ²
Floor Area	9.29 m ²

Agent Details

William Chen - 0430 026 436
william@greencliff.com.au

Office Details

Greencliff Sydney Kent St
Level 10/488 Kent Street Sydney NSW
2000 Australia
02 8823 8818

