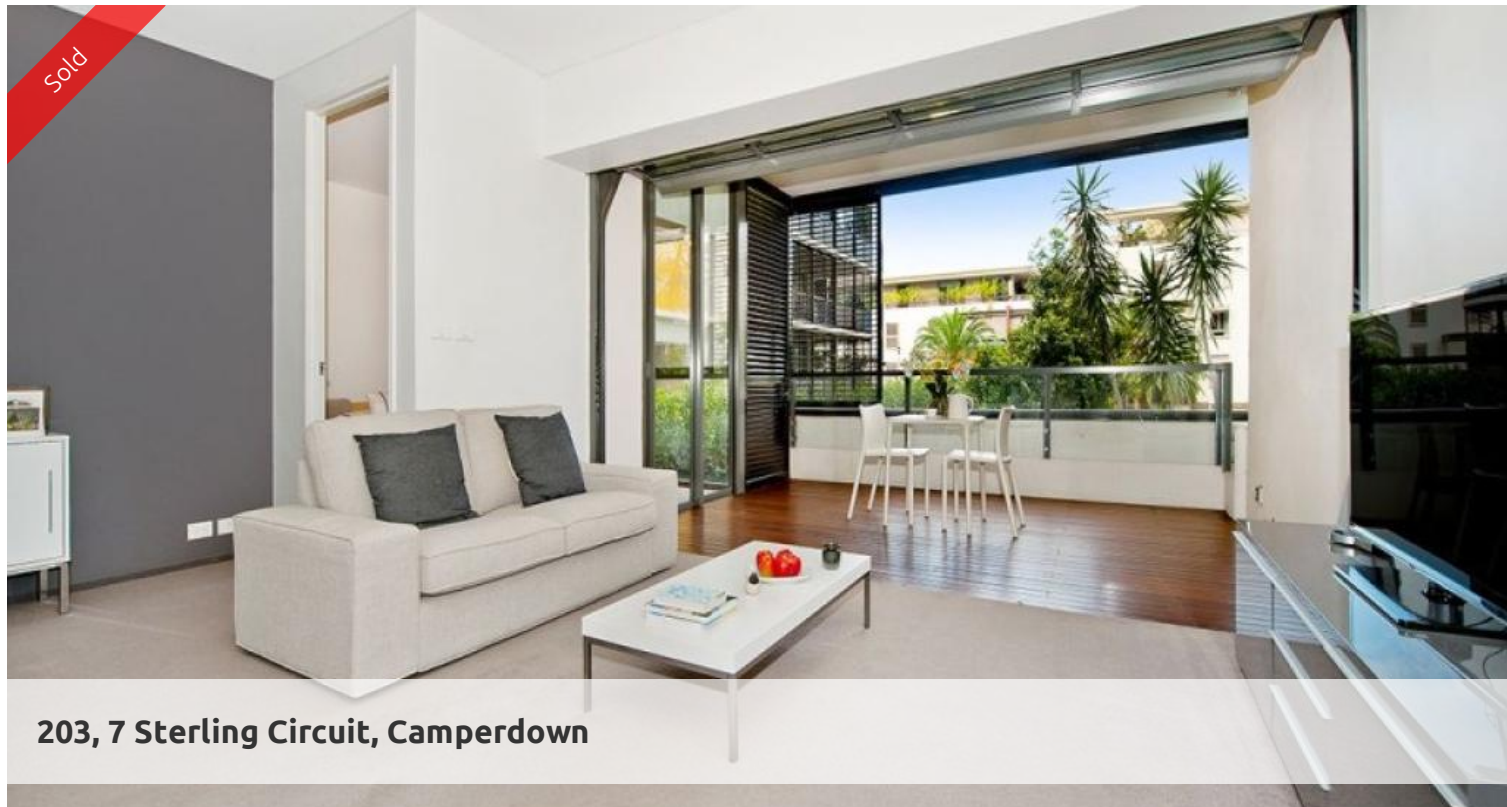
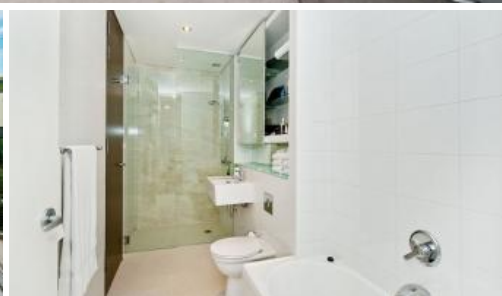


Sold



203, 7 Sterling Circuit, Camperdown



ALTRO – PERFECT PARK SIDE POSITION

Sure to impress this immaculate apartment offers light, space and comfort, from the moment you walk into this stylish one bedroom apartment you can relax and enjoy carefree living in the heart of the Inner West.

Features include;

- East position with lush leafy outlook
- Dual access bathroom with separate shower and bath
- Large loggia with enclosable shutters to allow for privacy
- Contemporary kitchen with marble bench tops
- Spacious bedroom with built-in robes
- Concealed internal laundry
- Secure undercover parking,

Superb recreational facilities including choice of 2 gyms, indoor 25 meter pool and outdoor 50 meter sparkling lap pool. Situated within the award winning "City Quarter" complex and within walking distance to Glebe & Annandale Village.

Moments to CBD, Royal Prince Alfred Hospital, University, Broadway Shopping Centre, theatres, cafes and vibrant shopping.

Outgoings

Strata - \$883.55 pq (approx)

Council - \$180.50 pq (approx)

Water - \$151.55 pq (approx)

1 bed 1 bath 2 car

Price	SOLD
Property Type	Residential
Property ID	1788
Land Area	0 m2
Floor Area	74.32 m2

Agent Details

William Chen - 0430 026 436
william@greenciff.com.au

Office Details

Greenciff Sydney Kent St
Level 10/488 Kent Street Sydney NSW
2000 Australia
02 8823 8818

greenciff
Inner city specialists