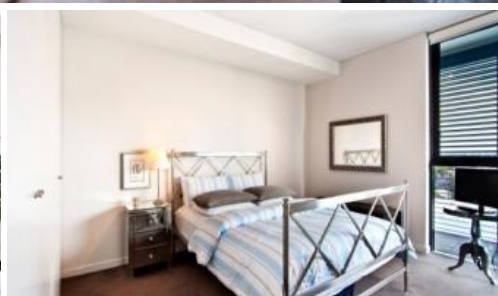


Sold



C901, 3 Sterling Circuit, Camperdown



STYLISH DESIGNER APARTMENT, HIGH LEVEL VIEWS & PRIVACY

This is an exciting opportunity to secure an exclusive piece of real estate in the architecturally designed Fender Katsalidis, Trio building, Developed to International standards by Frasers Property.

- Spacious pen plan living/dining
- Large entertainers loggia 15sqm
- Gourmet kitchen with Smeg appliances
- Intimate district views over Annandale/Stanmore
- Large bedroom with built-ins and balcony access
- Designer bathroom, separate bath/shower
- Intercom, pool, gym and landscaped gardens
- Ducted air-conditioning, dual-zoned
- Security parking, storeroom
- Immaculately maintained building

Trio is the final stage of the City Quarter development and offers a truly exceptional lifestyle, offering two gyms and two pools (indoor 25 metre and outdoor 50 metre lap) café, restaurants, 24/7 on-site security.

Absolute convenience only moments from Glebe and Annandale Village, close proximity to Universities, RPAH, Broadway Shopping Centre and the CBD.

Become a proud owner in this award winning development

Trio recently recieved the following accolades:

- Winner for 'High Density', UDIA National Awards 2010
- Joint Winner for 'High Density' UDIA NSW 2010

🛏 1 🚿 1 🚗 2

Price	SOLD
Property Type	Residential
Property ID	1773
Land Area	0 m2
Floor Area	74.32 m2

Agent Details

Emlyn Walters - 0405 606 025
emlyn@greenciff.com.au

Office Details

Greenciff Camperdown Office
Shop 1 1 Sterling Cct Camperdown NSW
2050 Australia
02 8262 8262

greenciff
Inner city specialists