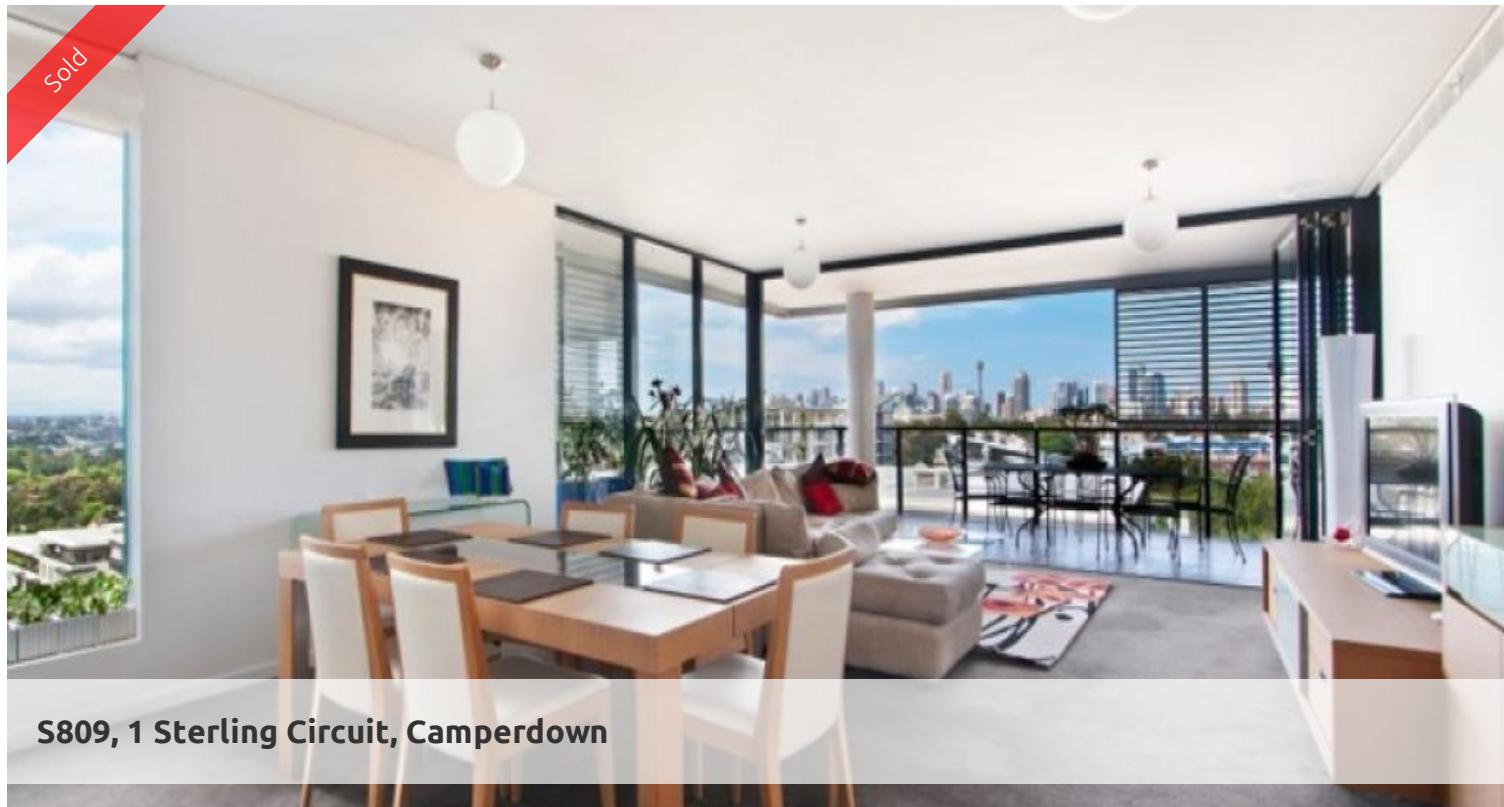
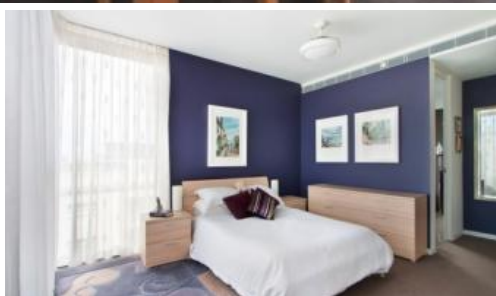


Sold



S809, 1 Sterling Circuit, Camperdown



COSMOPOLITAN OASIS WITH SWEEPING HARBOUR, CITY AND DISTRICT VIEWS, HUGE 141SQM

The scale of this apartment is inspiring. At 141sqm, this is a large scale two bedroom apartment which is sure to impress!

Nestled high above a lush tropical enclave, this spacious modern apartment enjoys a panoramic vista stretching north across the harbour and capturing postcard skyline views to the north-east. Providing privacy and tranquillity within a secure, highly sought after and tightly-held community.

This light filled north-east facing 8th floor apartment has 2 bedrooms, 2 bathrooms, a generous sized kitchen, which flows onto a wide living space which opens onto a large entertainers loggia, which acts as an extension of your living space.

This is a highly sought after floor plan which uniquely features virtually no common walls and wrap around floor to ceiling glass on all 3 sides to allow for maximum ventilation and natural light.

Be part of City Quarter's established community, including an indoor heated swimming pool and gymnasium and a 50m outdoor pool, café, restaurant.

Become a proud owner in this award winning development

Trio recently received the following accolades:

- Winner for 'High Density', UDIA National Awards 2010
- Joint Winner for 'High Density', UDIA NSW 2010
- Winner for 'Marketing' UDIA NSW 2009

🛏 2 🚿 3 🚗 1 🏠

Price	SOLD
Property Type	Residential
Property ID	1772
Land Area	0 m2
Floor Area	139.35 m2

Agent Details

Emlyn Walters - 0405 606 025
emlyn@greenciff.com.au
William Chen - 0430 026 436
william@greenciff.com.au

Office Details

Greenciff Sydney Kent St
Level 10/488 Kent Street Sydney NSW
2000 Australia
02 8823 8818

greenciff
Inner city specialists