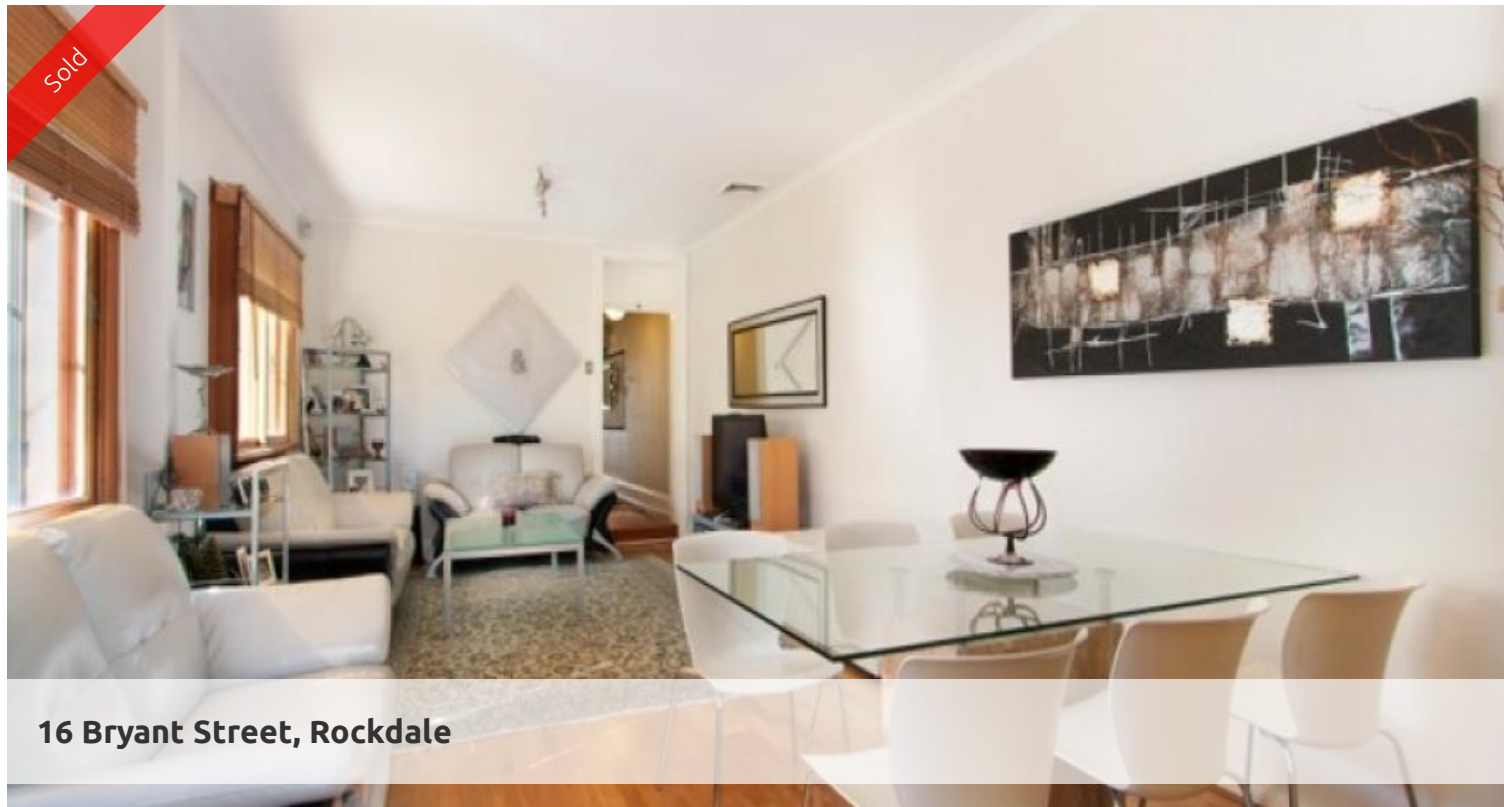
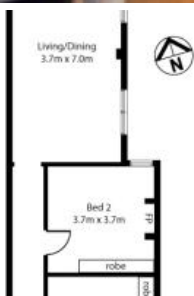
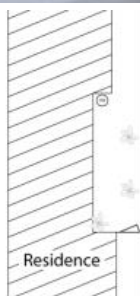


Sold



16 Bryant Street, Rockdale



CHARMING SEMI IN SUPER CONVENIENT LOCATION

This well positioned semi has been superbly refurbished mixing modern and many original features.

- Two spacious bedrooms, one with ornate fireplace
- Open plan living/dining bathed in natural light
- Timber floors throughout, high ornate ceiling
- Tiled entertaining deck, paved and landscaped back yard
- Updated kitchen with casers stone bench top
- Rear lane access with off street parking and remote garage door
- Modern bathroom, separate laundry
- Potential to add a 3rd bed /ensuite in existing roof structure, STCA
- Full air conditioned, double glazed

Perfect opportunity awaits to secure this home with loads of potential! Ready to move in as is or to add personal touches to create your perfect home.

Super convenient location, seconds from shops, cafes, parks, buses and rail in a popular tree lined street, hurry this won't last!

The above information provided has been furnished to us by the vendor/s. We have not verified whether or not that information is accurate and do not have any belief in one way or the other in its accuracy. We do not accept any responsibility to any person for its accuracy and do no more than pass it on. All interested parties should make and rely upon their own inquiries in order to determine whether or not this information is in fact accurate.

2 1 2

Price	SOLD
Property Type	Residential
Property ID	1769
Land Area	0 m2

Agent Details

William Chen - 0430 026 436
william@greenciff.com.au

Office Details

Greenciff Sydney Kent St
Level 10/488 Kent Street Sydney NSW
2000 Australia
02 8823 8818

greenciff
Inner city specialists