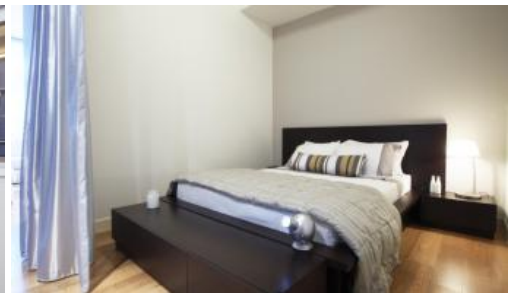




2514, 101 Bathurst Street, Sydney



One bedroom suite in award winning Lumiere Sydney

Offering a high level of finish and a clever use of space. This one bedroom suite would make an great first home, city bolt hole or high yielding investment.

Lumiere is Sydney's most elegant and innovative residential tower. Designed by internationally renowned architect Lord Norman Foster (Foster & Partners London), Lumiere has defined modern living for Sydney as the 'vertical village'.

This one bedroom suite rents for \$600 per week. Its layout offers a comfortable separation of living and sleeping areas. Features include internal laundry facilities, high ceilings with floor to ceiling glass, separate storage cage, ducted air conditioning, 24hr concierge and security.

Lumiere is a place to enjoy yourself, have fun and call home. It is a 'vertical village'. Imagine a new lifestyle with a 50m swimming pool, two gymnasiums, sauna, steam room, spa, dance & yoga room, two private theatrettes for private use & wireless internet.

DISCLAIMER: All information relating to this property contained within this advertisement is subject to change. Greencliff Realty attempts to update the information on this site on a regular basis, but can not guarantee accuracy at all times. Intending purchasers should refer to the contract of sale and satisfy themselves as to the accuracy of all information given by making their own inspections, searches, inquiries and advices or as is otherwise necessary. All finishes, photographs and or impressions may have been taken from an apartment with similar finishes or a display apartment in the development and are indicative of an actual unit only.

Features

1 1

Price	SOLD
Property Type	Residential
Property ID	1744
Land Area	0 m2
Floor Area	46.45 m2

Agent Details

William Chen - 0430 026 436
william@greencliff.com.au

Office Details

Greencliff Sydney Kent St
Level 10/488 Kent Street Sydney NSW
2000 Australia
02 8823 8818

greenc **ff**
Inner city specialists