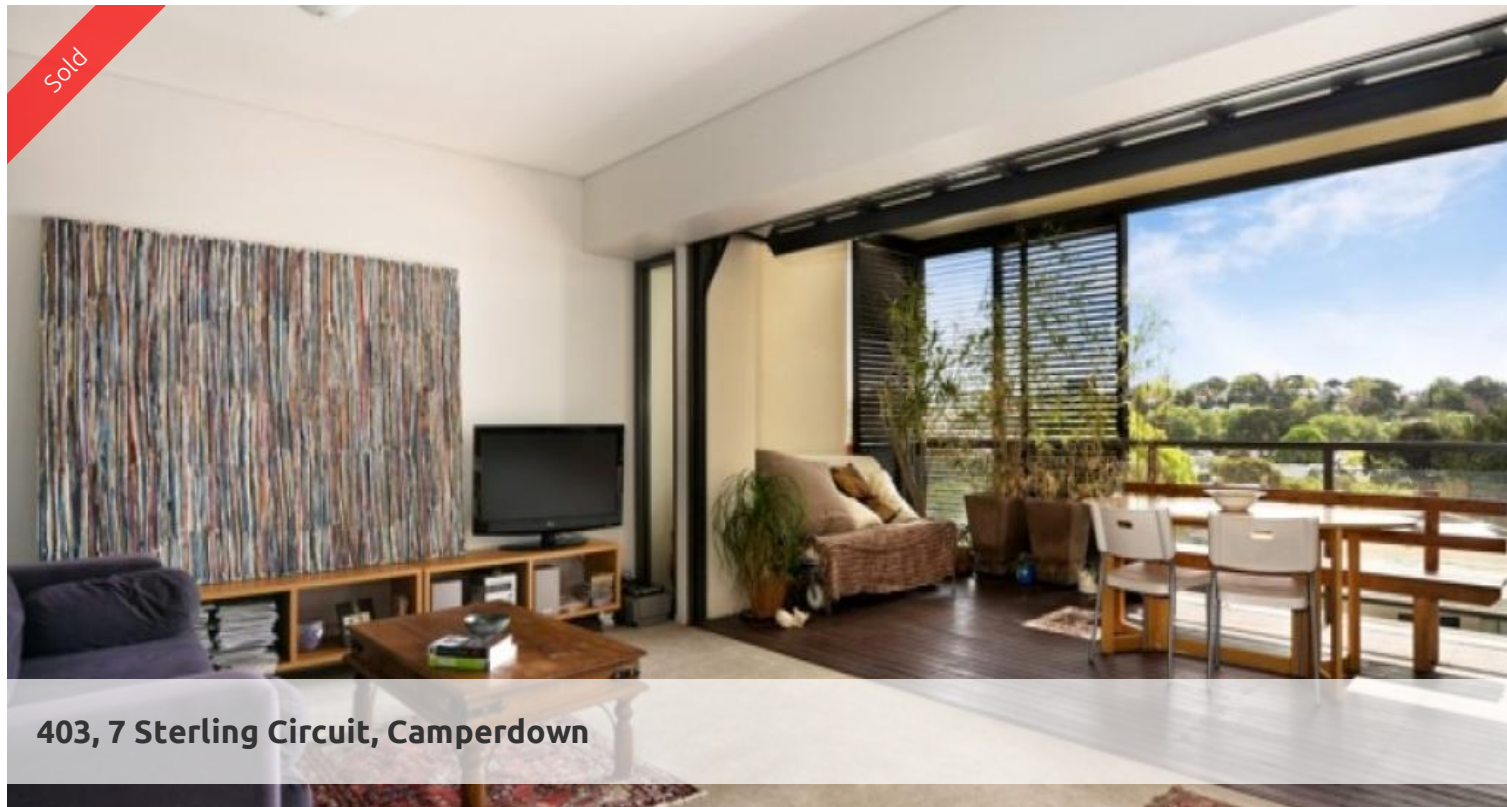


Sold



403, 7 Sterling Circuit, Camperdown



### ALTRO: RARE NORTH FACING 82SQM LOGGIA ONE BED

Be impressed by this oversized one bedroom apartment, functional floor plan offering plenty of space and ample storage.

Features include;

- Prized north position, private leafy outlook
- Sleek bathroom/separate shower and bath
- Thoughtful floor plan to maximize internal/external space
- Large loggia with shutters for privacy and comfort
- Large gourmet kitchen with loads of storage
- Spacious bedroom with built-in robes
- Secure undercover parking and storage

Live the lifestyle in this established estate, cafe, restaurants, 25 meter indoor pool and additional 50m lap pool, two onsite gyms and 24/7 onsite security.

Only moments to Glebe and Annandale Village, CBD, Royal Prince Alfred Hospital, University, Broadway Shopping Centre, theatres, cafes and vibrant shopping.

OUTGOINGS (Approx)

Strata \$856.75pq

Council \$185.00pq

Water \$130.00pq

1 bed 1 bath 1 parking

<b>Price</b>	SOLD
<b>Property Type</b>	Residential
<b>Property ID</b>	1714
<b>Land Area</b>	0 m2

#### Agent Details

William Chen - 0430 026 436  
william@greenciff.com.au

#### Office Details

Greenciff Sydney Kent St  
Level 10/488 Kent Street Sydney NSW  
2000 Australia  
02 8823 8818

**greenciff**  
Inner city specialists