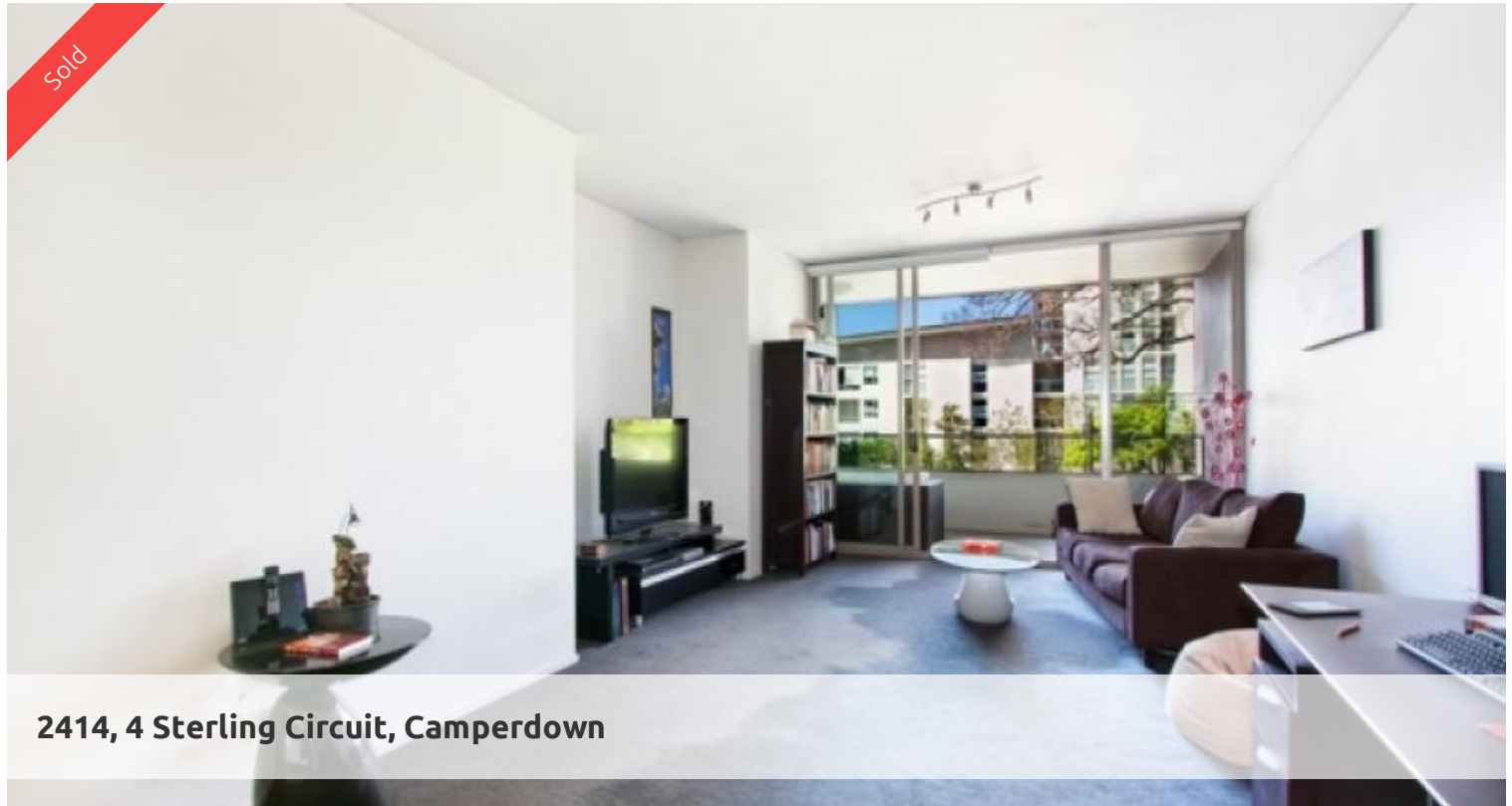


Sold



2414, 4 Sterling Circuit, Camperdown



EAST FACING LUXURY ONE BEDROOM-PREMIUM PARKSIDE POSITION

Loggia apartment in the highly acclaimed City Quarter development, 'Vie 2'

Features include:

- Village Green outlook to landscaped gardens and Jacaranda trees
- Bathroom with bath and separate shower
- Expansive loggia, enclosable
- Spacious bedroom with built-in robes
- Luxury finishes/ Smeg appliances
- Relaxed east facing position
- Internal laundry
- On site security (24/7)
- Two gyms and two pools (indoor 25 metre and outdoor 50 metre)

Car spaces available for lease in the building

Conveniently located only moments from Glebe and Annandale Village, and in close proximity to Universities, RPAH, Broadway Shopping Centre and the CBD, the property presents opportunity for owner/occupiers seeking a vibrant lifestyle as well as the astute investor.

The above information provided has been furnished to us by the vendor/s. We have not verified whether or not that information is accurate and do not have any belief in one way or the other in its accuracy. We do not accept any responsibility to any person for its accuracy and do no more than pass it on. All interested parties should make and rely upon their own inquiries in order to determine whether or not this information is in fact accurate.

1 bed 1 bath 1 loggia

Price	SOLD
Property Type	Residential
Property ID	1713
Land Area	0 m2

Agent Details

William Chen - 0430 026 436
william@greenciff.com.au

Office Details

Greencliff Sydney Kent St
Level 10/488 Kent Street Sydney NSW
2000 Australia
02 8823 8818

greenciff
Inner city specialists