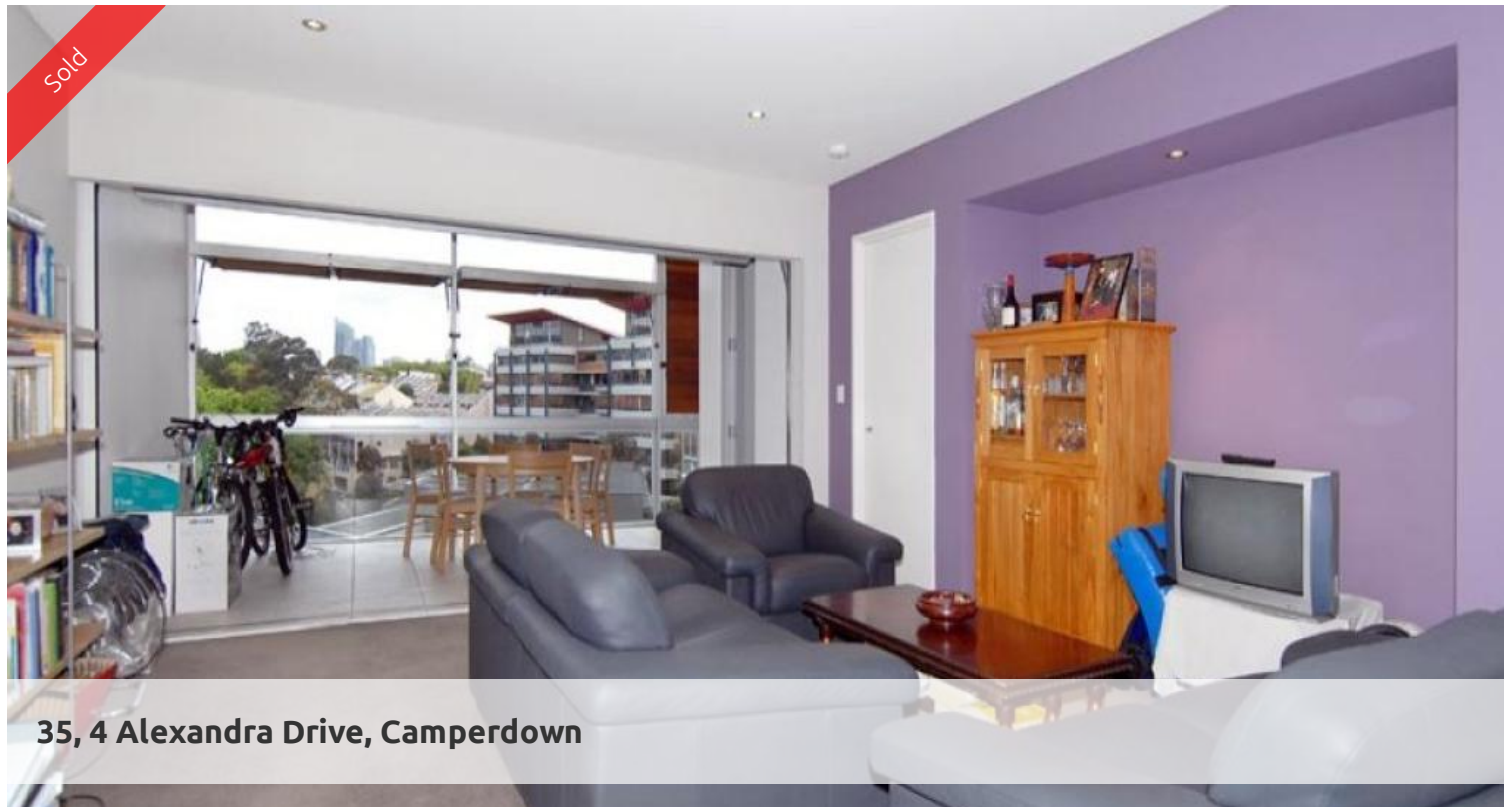


Sold



35, 4 Alexandra Drive, Camperdown



North facing one bedroom with city and district views (UNDER OFFER)

Suberb one bedroom in the "Aquilion" building. Features include open plan living/dining with motorized monarch door, large loggia balcony with timber louvers for maximum privacy and comfort, gourmet kitchen with Smeg appliances, dual entry bathroom with separate bath and shower, security parking.

City Quarter is located between the eclectic villages of Glebe and Annandale, close to Broadway Shopping Centre, Royal Prince Alfred Hospital and city's university precinct.

The above information provided has been furnished to us by the vendor/s. We have not verified whether or not that information is accurate and do not have any belief in one way or the other in its accuracy. We do not accept any responsibility to any person for its accuracy and do no more than pass it on. All interested parties should make and rely upon their own inquiries in order to determine whether or not this information is in fact accurate.

1 bed 1 bath 1 car

Price	SOLD
Property Type	Residential
Property ID	1615
Land Area	0 m2
Floor Area	74.32 m2

Agent Details

William Chen - 0430 026 436
william@greenciff.com.au

Office Details

Greenciff Sydney Kent St
Level 10/488 Kent Street Sydney NSW
2000 Australia
02 8823 8818

greenciff
Inner city specialists